

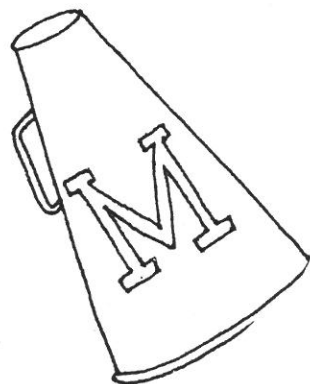
# MARBLEHEAD

## SUPPORT MARBLEHEAD FOOTBALL

MAGICIANS  
GRIDIRON  
CLUB



MAGICIANS  
GRIDIRON  
CLUB



1921 (9-3-0)

Coach Raymond  
Pendleton

|    |                        |    |
|----|------------------------|----|
| 20 | Quincy                 | 0. |
| 13 | Gloucester             | 0  |
| 7  | Peabody                | 14 |
| 23 | Danvers                | 0  |
| 27 | Winthrop               | 6  |
| 0  | Lynn Classical         | 7  |
| 74 | Chelsea                | 0  |
| 13 | Beverly                | 7  |
| 27 | Lynn English           | 6  |
| 0  | Revere                 | 13 |
| 21 | Swampscott             | 0  |
| 10 | Salem (post<br>season) | 7  |

235

60



# MARBLEHEAD 13, FISHTOWNERS 0

## Gloucester Holds Headers Off Until Third Period

|                  |                |
|------------------|----------------|
| MARBLEHEAD       | GLouceSTER     |
| Hanson, le.....  | re, Hemmer     |
| Clark, lc.....   |                |
| Clay, lt.....    | rt, Ehler      |
|                  | rt, Sampson    |
| Burns, lg.....   | rg, Hardrop    |
| Doliber, lg..... | rg, McLaughlin |
| Goodwin, lg..... | 5              |
| Martin, c.....   | c, Paul        |
| Reech, rg.....   | lg, Jacobs     |
| Snow, rg.....    |                |
| Walton, rt.....  | lt, Kelley     |
| Gillis, rt.....  |                |
| Peach, re.....   | le, Thomas     |
| Stone, re.....   |                |
| Chase, qb.....   | qb, Curtis     |
| Tansey, lhb..... | rhb, Powers    |
| Mace, lhb.....   |                |
| Kelley, rhb..... | lhb, McLeod    |
| Haskell, fb..... | fb, Oblson     |

Score—Marblehead, 13, Gloucester 0. Touchdowns—Tansey and Haskell. Referee—Moore, U. of M. Umpire—Morse, M. A. C. Linesman—Keefe, Tufts. Time—Four 10-minute periods.

Marblehead High school football eleven ripped, tore and smashed its way to victory over the Gloucester High gridmen at Evans park. Marblehead, yesterday afternoon, to the tune of 13-0. The winners looked supreme in victory, while the losers looked good, even in defeat. For four long ten-minute periods, the Head team smashed. For four ten-minute periods the battle had the watchers on edge as startling plays, daring ends runs and dazzling air passes gave the fans the impression that the contest only would be decided when the final whistle had blown.

### Both Teams Strong

For the first half of the game, neither team scored, with both outfits bracing against each other like stone walls, while time and time again the heavy backs of both teams would be thrown against the defence of the opposing team only to meet rebuke. It was not until the third quarter, that Marblehead by a series of fine and alert plays, managed to bring the ball within striking distance of the goal and then, with a mighty effort, withstood by a mighty team, the winners with Joe Tansey bearing the oval, trooped over the last chalk line for the first score of the game. The goal was not kicked.

Terrific playing marked the last quarter, which far surpassed the previous quarter as far as sterling playing was concerned. For the long ten minutes, each team displayed in amount of prowess which would do justice to an eleven that had played together for a number of years. In the final minute of the contest, Haskell pushed his way over the final mark drawn by the ground-keeper which denoted the end of the long struggle.

## THE SALEM EVENING NEWS

MONDAY, OCTOBER 3, 1921

# 'Head High Eleven Defeats Gloucester By Score of 13-0

In a loose game in which Marblehead High's light team outplayed Gloucester High, Marblehead High won its initial game in the North Shore league at Seaside park Saturday afternoon. Kelley, Tansey, Haskell and Olsen featured. The summary:

|                   |                |
|-------------------|----------------|
| MARBLEHEAD        | GLouceSTER     |
| Stone, le.....    | re, Thomas     |
| Peach, le.....    | re, Nelson     |
| Clay, lt.....     | rt, Kelley     |
|                   | rt, Martin     |
| Burns, lg.....    | rg, Jacobs     |
| Doliber, lg.....  | rg, Glynn      |
| Martin, c.....    | c, Paul        |
| Reed, rg.....     | lg, Wabrope    |
| Snow, rg.....     | lg, McLaughlin |
|                   | lg, Vibert     |
| Gillis, rt.....   | lt, Ehler      |
| Walton, rt.....   | lt, Sampson    |
| Clark, re.....    | le, Hemmer     |
|                   | le, Healy      |
| Chase, qb.....    | qb, Curtis     |
| Mace, qb.....     |                |
| Tansey, lhb.....  | rhb, Jerh      |
|                   | rhb, McLeon    |
|                   | rhb, Harding   |
| Haskett, rhb..... | lhb, Harding   |
| Kelley, fb.....   | fb, Olsen      |

Score, Marblehead High 13. Touchdowns, Tansey, Haskell. Goal from touchdown, Martin. Referee, Moore, U. of M. Umpire, Morse, M. A. C. Linesman, Keefe. Time, 10m periods.

## THE SALEM EVENING NEWS

WEDNESDAY, OCTOBER 19, 1921

# Marblehead High May Withdraw From League

Changes in the makeup of the North Shore league are expected for the next baseball season. The league is reported as ready to take action on requesting Chelsea to withdraw from the league, and a report comes from Marblehead that the 'Headers are now considering resigning on the grounds that the league football teams are too heavy for the town team. A report from Marblehead describes the situation.

A very considerable number of ardent supporters of Marblehead High school athletics are strongly in favor of having the Marblehead High school withdraw from the North Shore league. It is likewise stated that some of the members of the school committee share this sentiment. The subject is being discussed about the town at the present time.

This change is favored for several reasons. One is that the Marblehead High school football team could play its games on the home grounds if it ceased its connection with the league. Another consideration is that by booking games independently the local football team would be enabled to meet opponents whose average weight was about the same as their own. As a rule the Marblehead High school football elevens have been the lightest in the North Shore league.

## LYNN TELEGRAM

OCTOBER 13, 1921

# MARBLEHEAD 23 DANVERS H. S. 0

## Headers Prove Too Fast and Follow Ball Too Closely

|                    |               |
|--------------------|---------------|
| MARBLEHEAD         | DANVERS       |
| Stone, le.....     | re, Wilkes    |
| Peach, le.....     |               |
| Gillis, lt.....    | rt, Cates     |
| Grant, lt.....     |               |
| Doliber, lg.....   | rg, Wheeler   |
| Martin, c.....     | c, Cody       |
| Reed, rg.....      | lg, Jenkins   |
| Walton, rt.....    | lt, Coffin    |
| Snow, rt.....      | lt, Moriarty  |
| Clark, re.....     | le, McCaffrey |
| Hunson, re.....    |               |
| Lewis, qb.....     | qb, Dearanne  |
| Eustis, qb.....    | qb, Ambrose   |
| Tansey, lhb.....   | rhb, Brown    |
| Mace, lhb.....     |               |
| Eustis, rhb.....   | lhb, McCarty  |
| Sweetland, fb..... | fb, Dremau    |
| Kelley, fb.....    |               |

Score—Marblehead 23. Touchdowns, Stone, Eustis, Mace. Goals from touchdowns—Tansey 2, Eustis. Safeties—Peach. Referee—Moore. Umpire—Morse. Linesman—Williams. Time 10m. periods.

Marblehead High yesterday morning at Evans park, successfully took the measure of Danvers High to the tune of 23-0. The Headers were held off until the second half and then came speedily. Ability to follow the ball and to take advantage of all the bad breaks of the visitors featured the work of Pendleton's Pets, Hunson, Stone, Tansey and Sweetland were the stars.

# HEADERS CRUSH WINTHROP 27-6

Ye Old Shoe String Play is  
What Started the Boys  
to Victory

**WINTHROP** Werbel, McIntire, lc re. Stone, Clark Baker, lt . . . . . rt, Gillis, Grant Honan, Joyce, lg rg, Reed, W. Snow Turner, c . . . . . Martin, Smathers Campbell, rg . . . . . lg, Doliber, F. Snow Freeman, rt. . . . . lt, Walton, Doliber Walton, McGunnigle, re  
**MARBLEHEAD** re, Peach, Campbell Sullivan, qb . . . . . qb, H. Eustis Fulan, Walton, rhb . . . . . lhb, Tansey, Mace Russell, lhb . . . . . rhb, Haskell, Kelly Saunders, fb. fb, Sweetland, Colbert  
Score—Marblehead 27, Winthrop, 6. Touchdowns—Eustis, Haskell 2. Peach, Saunders. Goals—Tansey 3. Head linesman—Ross, Dorchester. Referee—Allen, Salem Normal. Umpire—Morse, Mass. Aggies. Time—Four 10m periods.

## AN ANCIENT TRICK

Ye old sho string play, as ancient as the hills and still good when least expected, was what started Marblehead on to victory and broke up the morale of Winthrop yesterday in the North Shore league while Coach John Manter raved and tore his hair along the sidelines. Tansey to Peach was the way the stunt was pulled in the third period and before the contest wound up those foxy 'Headers were on top 27-6.

The contest opened with Marblehead kicking off to Winthrop. Winthrop received on their own 20-yard line and then marched down the field to the 'Head threeyard line on a series of end runs and line bucks only to fumble and lose a beautiful chance to score. The game from then on was slowly played with flashes of real football occasionally.

## Marblehead Strategy

It took Marblehead in the second half to furnish the excitement of the afternoon. With the ball on Winthrop's 30-yard line and Manter's boys fighting persistently, the 'Headers pulled a play that is so old that it was not expected, namely the shoe string play.

Peach, the 'Header's left end, who appeared to be tying his shoe was left unmolested and the minute the ball was put into play raced down the field, grabbed a forward thrown by Tansey for the initial score. Tansey failed to kick the goal. Marblehead again scored in this period by brilliant work on the part of quarterback Eustis who also made the touchdown himself. Tansey kicked the goal.

Wintthrop came back in the fourth period with a little fight and scored on a series of line plunges by Saunders, the semegambian who went over for a touchdown. Winthrop failed to kick the goal. Marblehead came back with a vengeance and scored again. Haskell, on a spectacular end run scored the final touchdown for the 'Headers. Eustis, Capt. Tansey and Haskell shined for Marblehead, while Saunders and Russell were the bright lights for Winthrop.

The game ended with the ball in midfield.

# CLASSICAL AND 'HEAD HIGH IN GRIDIRON BATTLE

## Lynn Eleven Favored to Win Over Scrappy, Light Eleven Of Marblehead on Saturday

Bill Joyce's Classical High gridiron stars meet a worthy foe when they battle the light, but scrappy, Marblehead combination at Little River playgrounds, Saturday afternoon. The 'Head team forced Peabody to work hard for a victory two weeks ago Peabody landing on top, 14 to 7, and Roy Pendleton's lads are expected to make plenty of trouble for the Red and White team. The kickoff is scheduled for 2:30 PM sharp.

Marblehead High's team of the past three years has been one of those light combinations that depend largely on speed and the aerial game to land on top. No team in the North Shore league has mastered the forward pass any better than Marblehead and this year's team is equally as fast as that which has represented the town in the inter-sectional games of the past seasons.

Over at Marblehead, the residents are confident that the boys will wipe out the defeats of the past two seasons when Pendleton's boys open up on Classical tomorrow. The two main cogs in the Marblehead attack are Tansey and Sweetland. These youngsters are expected to scintillate in the game here.

Bill Joyce's team is reported as due for changes. The Classical coach is not satisfied with the way several of the regulars have been showing in practice and may give several of the youngsters a chance to show their worth. The report that the second team scored three times against the first at Hap Ward's estate Wednesday indicates that several changes are coming.

Classical will take no chances, however, tomorrow. Marblehead has won four out of five games this year. It has victories over Gloucester and Winthrop in the league series and its only setback has been that given by Peabody. Marblehead has showed well in games against Danvers and Quincy, also, and is regarded as one of the fastest lightweight teams in this section.

Coach Joyce gave the boys a long blackboard talk yesterday and followed with signal practice in the school yard. Several of the backfield men then practised kicking goals at the Sanderson avenue lot.

The probable lineup of the Classical team for tomorrow follows: Blanchette, lc; Archoska, lt; Russell, lg; Larkin, c; Sessen, rg; Allen, rt; Dunbar, re; Ryan qb; Pickering, lhb; Mason, rhb; Mishel, fb.

The probable Marblehead lineup will be Peach, lc; Walton, lt; Doliber, lg; Martin, c; Reed, rg; Gillis, rt; Stone, re; Eustis, qb; Tansey, lhb; Haskell, rhb; Sweetland, fb.

The officials selected are: Referee, Fred W. Lewis, Wesleyan; umpire, Charles D. C. Moore, U. of Maine; headlinesman, T. D. Keefe, Holy Cross.

## CONFIDENCE DISPLAYED.

The local sport followers are in agreement touching the quality of football displayed by the Marblehead High school team last Saturday afternoon when it crushingly defeated the Winthrop High school eleven at Winthrop by a score of 27 to 6.

They account the game played by Coach Pendleton's boys, easily one of the finest exhibitions of football ever given by a team representing the Marblehead High school. The splendid work of the local players in this contest has not ceased to be a leading topic of conversation in sport circles here. The truth is that the brilliant performance of Coach Pendleton's athletes in the battle with Coach Manter's aggregation presents a hook upon which the supporters of the Marblehead High school team are hanging. Feelings of confidence respecting the achieving of victory by the local outfit in the big game with the Lynn Classical High troop at Little River playground, Lynn, tomorrow afternoon. Probably the largest number of persons that ever went to Lynn from this town to witness a game between these two teams will attend tomorrow afternoon's combat.

The interest aroused in Marblehead in this approaching game is almost as great as that which the annual gridiron classic on next Thanksgiving Day between Marblehead High and Swampscott High will occasion.

# LEAGUE RECORD AT MARBLEHEAD

Headers Chalk Up 74-0  
Score on Helpless  
Chelsea High

**MARBLEHEAD**      **CHELSEA**  
Peach, le ..... re, Slotnick  
Walton, lt ..... rt, Gilbert  
Deliver, lg ..... dg, Gosse  
Martin, c ..... c, Shapiro  
Reed, rg ..... lg, Alpert  
Gillis, rt ..... lt, Duncan  
Hunson, re ..... lc, O'Neil  
Eustice, qb ..... qb, Bairschose  
Tansey, hb ..... rhb, Bates  
Haskell, rhb ..... lb, Salter  
Sweetland, fb ..... fb, Cairnes  
Score—Marblehead 74; Chelsea 0.  
Touchdowns—Sweetland, Haskell,  
Tansey, Eustice 3, Snow.  
Goals from Touchdowns—Tansey 9.  
Goal from Placement—Tansey.  
Referee—Moore.  
Umpire—Birmingham.  
Linesman—Lombard.

### SOME SLAUGHTER !

Marblehead took Chelsea yesterday afternoon down at the seaside resort to the tune of 74-0, the largest score ever turned in by any North Shore league team. Capt. Tansey and his lads hit the cellar champs with everything except the proverbial waterbucket. And the funny part of it is the Marblehead fans are sore. The husky Headers tried everything in the category of football, shoestrings, strong and weak sides, passes and placement kicks but they forgot to try a field goal and that is what the fans got sore about.

Coach Pendleton must have made his scrappers think that the opposing team was Classical. At any rate the way Tansey and company sailed into them would give the opinion that the defeat of last week was being worked off in a "curse you, take that" fashion. Capt. Tansey was the outstanding star if there were any outstanding stars in this slaughter of the innocents, and two of his outside kicks were recovered by his teammates and subsequent touchdowns followed. Again in the second period Tansey tore for a touchdown on the very first play.

### Every Member In

Another score was made when Chelsea was penalized 11 yards for interfering after a fair catch had been signaled for. Two 30 yard forward passes were completed for the Headers, Tansey to Hunson and Haskell, the latter scoring.

Every man on the Marblehead squad, even to the lowliest scrub had a chance and the substitutions came so fast that no attempt at keeping a record was made by the scorers.

# MARBLEHEAD SCORES TOTAL 74 OVER CHELSEA

Coach Pendleton's dashing Marblehead High school gridiron warriors rolled up a record-breaking score for the North Shore league season at Evans park, Marblehead, last Saturday afternoon, when the local aggregation scored 74 points and held the Chelsea High school outfit scoreless.

The Marblehead boys, although opposed by a very weak team, deserve unstinted praise for the brilliant exhibition they gave from overture to finale.

In the first two or three minutes of play in the initial quarter it was obvious that the visitors were hopelessly outclassed by the locals. Marblehead secured 23 points in the opening quarter and made 31 more in the second period.

In the last half of the contest the second and third string players were sent in. Joe Tansey was easily the star performer of the game, his speed and cleverness and versatility combining to make his work a high conspicuous feature of the matinee. Howard Eustis filled the quarterback berth in an exceedingly creditable manner and Haskell and Martin performed in splendid fashion.

The lineup:  
**MARBLEHEAD H. S. CHELSEA H. S.**  
Peach, Stone, l.e. .... r.e., Slotnick  
Walton, Doliber, lt. .... rt., Gilbert  
Deliber, Pomeroy, lg. .... rg., Gosse  
Martin, Smethurst, c. .... c., Shapiro  
Reed, H. Snow, r.g. .... lg., Alpert  
Gillis, N. Snow, rt. .... lt., Duncan  
Hunson, Clark, r.e. .... l.e., O'Neil  
Eustis, Tansey, q.b. .... p.b., Bairschhoff  
Tansey, Mace, l.h.b. .... r.h.b., Bates  
..... fh High rifle.  
Haskell, Colbert, rh.b. .... lh.b., Salter  
Sweetland, Kelley, f.b. .... fb., Cairnes  
Score—Marblehead, 74 Touchdowns  
—Sweetland, Haskell, Tansey 4, Eustis 3, H. Snow. Goals from touchdowns—Tansey 9. Goal from field—Tansey. Safety—Reed. Referee—Moore. Umpire—Birmingham. Head linesman—Lombard. Time—10-minute periods.

NOVEMBER 5, 1921.

# HEADERS AFTER BEVERLY TODAY

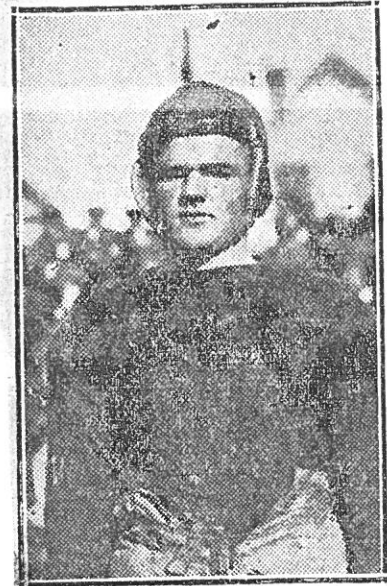
Most Important Clash of  
North Shore League  
to See Action

Beverly High—Harrington, le.; Semons, lt.; Fert, lg.; Couhig, c.; Davis, rg.; Clark, rt.; Donnelley, re.; Gray, qb.; Brady, lb.; Smith, rhb.; Hilyard, fb.

Marblehead—Peach, lc.; Walton, lt.; Doliber, lg.; Martin, c.; Reed, rg.; Gillis, rt.; Hunson, re.; Eustis, qb.; Tansey, lb.; Haskell, rhb.; Sweetland, fb.

TIME—Today at 2.30 P.M.  
PLACE—Beverly Athletic Field.

MARTIN, STAR CENTRE  
FOR MARBLEHEAD H. S.



HEAPY MARTIN  
Marblehead's Great Little Centre,  
Who is Playing a Great Game

Marblehead High has a great little centre and they call him "Heapy Martin," who is everywhere making the hardest kind of tackles either through the line or on the wings—it makes no difference to the flashing Heapy.

In the Classical game a week ago he was one of the shining stars of the conflict and though the Headers lost it was through no fault of the 138 lb. middleman of Coach Pendleton.

### HEADERS IN EARNEST

With plenty of dash, fire and pepper, Marblehead will tear into Beverly High today in the most important struggle of the North Shore league, and a big crowd is to accompany the war-like Headers over to the Garden City.

Marbleheaders figure that they were balked of their prey in Classical, two weeks ago at Little River, and today's battle has whetted their determination to take it out on Beverly. And there is nothing that Capt. Tansey of the aggressive jaw, likes any better than to pull down and trample the leaders.

Coach Fitzgibbons of Beverly is some what concerned over the outcome of the game for he realizes that the leaders, under the wise Pendleton, are resourceful, tricky and battlers despite the disparity in weight.

### WATCHING PENDLETON

His scouts who attended the Classical-Marblehead game all reported to keep a sharp eye on Pendleton, and Fitz has not been caught asleep today, he believes.

Beverly came out of the Classical game in pretty good shape, although the squad was somewhat blue over not being able to score from the one-foot and four-foot lines during that hectic third period.

**MARBLEHEAD PUTS CRIMP INTO BEVERLY BY SHEER GAMENESS**

**Tansey's Great Work Best of Season in North Shore League Takes Victory Away From Beverly in Final Quarter. Near Riot Also at This Contest. Score 31 to 7.**

**MARBLEHEAD** Peach, le ..... re, Donnelly Clay, lt ..... rt, Clark Doliber, lg ..... rg, Davis Pomeroy Martin, c ..... c, Couhig Reed, rg ..... lg, Pert Snow ..... Batchelder Gillis, rt ..... lt, Seamons Hunson, re ..... le, Harrington Hustis, qb ..... qb, Gray Haskell, rbb ..... lhb, Tratt Smith

**BEVERLY** re, Donnelly rt, Clark rg, Davis c, Couhig lg, Pert Batchelder lt, Seamons le, Harrington qb, Gray lhb, Tratt Smith

Tansey, lhb ..... rbb, Brady Sweetland, fb ..... fb, Hillyard

Score—Marblehead 13, Beverly 7. Touchdowns—Tansey 2, Gray. Goals—Tansey, Gray. Referee—Moore, Univ. of Maine. Umpire—Morse, Mass. Aggies. Head Linesman—Babcock, Malden. Periods—4 10m.

By ED EAGAN

Marblehead and Beverly met yesterday in the most important game of the North Shore according to the wise birds, and the boys from the fish town finally landed on top after a hectic fourth period. It was a hard fought and cleanly played tussle and the better team won the victory. Marblehead showed, or rather Mr. Tansey, that a team may be down but never out. The way Marblehead played in the last period with the score 7 to 0 against was a pleasure to the spectators' wind burned eyes.

The game opened with Beverly winning the toss, with the said team choosing to let Marblehead kick off to them. The kick proved a fluke, the ball rolling up the field until one of the boys in the black jerseys picked it up. Hillyard, the bucking ace on the Beverly team failing to gain on three straight rushes forced Gray to kick on the fourth down. With the ball on Marblehead's 20 yard Haskell on the first rush fumbled and the ball and Beverly recovered. Hillyard grabbing the ball from the quarterback plunged on through center for first down. On the next rush Gray carried the piskin to the one yard line. Gray went over for the touchdown, and kicked the goal all in the first four minutes of play.

**HEADERS START FIGHTING**

Here the game looked easy for Beverly but as fate would have it, the worst was yet to come, Beverly immediately kicked to Marblehead who let the ball roll and brought it out to the 20 yard line. Haskell on first down gained five yards through left tackle. Tansey on an end run made first down. Here failing to move the Headers punted, Beverly fumbling the ball but recovering. Beverly thus returned the compliment. Tansey failing to gain kicked on second down.

Beverly made first down and Gray on the next play zig-zagged his way from one side of the field to the other crossed the chalk mark for a supposed touchdown but in doing so he stepped offside and the ball was brought out again much to the disappointment of the Beverly rooters. Here Gray tried a dropkick but he missed by a mile. This ended the first quarter. The second quarter was as dead as the people buried in Pine Grove cemetery, with a few

occasional flashes of real football.

The second half opened with Beverly kicking off to Marblehead. The Headers failing to gain on line bucks and end runs punted. At this point Beverly tried the "Gray to Donnelly" combination but it was put on the hummer by Kid Eustis, the sterling quarterback, who intercepted the forward. He was tackled so hard that he saw the Garden city covered with all kinds of Chinese flowers.

Marblehead punted to Beverly's 20 yard line, Gray receiving. Here Beverly was penalized for punching Haskell in the nose and the ball was hight back to their goal line. Beverly then punted to Marblehead's 15 yard line, kicking against a strong north wind. Here Tansey cast off his helmet and tried a dropkick but the ball was passed poorly and he chased it up the field scooping it up in his dukes and trying to run it back but was tackled before he could start to run. Here Beverly lost ground and kicked.

**Marbleheaders Do Go**

Marblehead then seeing no time like the present, yelled "let's go," and believe the writer they did go. The first play was a completed forward from Tansey to Peach and here a jam commenced. The over anxious Marblehead and Beverly rooters broke the ropes on the side lines and swarmed on the field. The game was held up until the crowd moved back and during this Pendleton and Fitzpatrick had a verbal scrap. Finally the game commenced and on a sweet forward from Eustis to Tansey, Tansey romped across Beverly's chalk mark for Marblehead's initial score. Here the mob was held breathless as Tansey attempted to kick the goal. But with the wind and the luck against him he failed. There was a murmur of "oh's" in the crowd and Marblehead's chances looked slim while the one point looked good to Beverly.

Marblehead then kicked off to Beverly. Beverly started down the field on straight line bucks but the Headers held them with grim determination. Beverly punted and Marblehead returned the compliment, and recovered on their own 30 yard line. This was Marblehead's only chance and they made good, showing their great pluck and fight. Haskell plowed through guard for eight yards, bringing the ball to Beverly's 22 yard line. Tansey on second down carried the ball over the chalk line for the last and decisive score of the game. He also added more laurels to the victory by kicking the almost impossible goal against the wind.

**Tansey a Whale**

The ball was then kicked to Beverly and the referee's whistle sounded, ending the game. A great demonstration was seen when the spectators rushed on the field and carried Tansey, the lone outstanding star of the game upon their shoulders, triumphantly, for it was Marblehead's day. Tansey played a whale of a game and a whole lot of credit is due him, for his bright work is not often equalled in schoolboy football.

**Beverly Loses First Game of the Season**

BEVERLY, Nov. 5.—Beverly High lost its first game of the season today to Marblehead High, 13 to 7, before a crowd of 3500. Beverly lost a chance to win after Gray had made a 50-yard run for a touchdown, but he was declared to have run outside and to have lost the points. Hillyard made Beverly's score on a series of line plunges. Pansey was the hero for Marblehead and made both touchdowns after well-executed forward passes.

**MARBLEHEAD** Peach, le ..... re, Donnelly Walton, lt ..... rt, Cressy Dolleher, lg ..... rg, Davis Martin, c ..... c, Couhig Reed, Pomeroy, rg ..... lg, Pert, Batchelder Gellis, rt ..... lt, Semons Hanson, re ..... le, Harrington Hustis, qb ..... qb, Gray Mansey, lhb ..... rbb, Brady Haskell, rbb ..... lhb, Smith, Pratt Sweetland, fb ..... fb, Hillyard

**BEVERLY** re, Donnelly rt, Cressy rg, Davis c, Couhig lg, Pert, Batchelder lt, Semons qb, Gray rbb, Brady lhb, Smith, Pratt fb, Hillyard

Score—Marblehead 13, Beverly 7. Touchdowns—Made by Hillyard, Pansey 2. Goals from touchdowns—Gray, Pansey. Referee—Moore. Umpire—Morel. Field Judge—Babcock. Time—Four 10-minute periods.

**BOSTON SUNDAY POST NOVEMBER 6, 1921**

**NEAR RIOT AT N. SHORE GAME**

**Swampscott Coach Swings on Linesman**

The Swampscott-Lynn English High football game nearly ended in a riot at Paradise Road Playgrounds yesterday and merely for the fact that Swampscott police officers were quick to grasp the situation and disperse the angry spectators someone might have been seriously injured. Coach Stephen White of the Swampscott eleven ran out on the sidelines, and took a swing at Head Linesman Charles E. McGhee when the former declared that the Lynn English players were using the straight arm too strenuously. Swampscott fans were quick to follow their Coach and before the players could move a crowd of nearly 600 angry fans surrounded the head linesman and the players, but the police officers dispersed the crowd. The incident took place at the end of the first half. The game was resumed in the second half, however, and Lynn English succeeded in winning, 26 to 21.

Hadley, fullback for Lynn, made several successive gains through centre and around the ends and scored two touchdowns for his side. Current,

played excellent football for Swampscott and likewise made two touchdowns. The contest was close and interesting and but for the incident at the second half proved to be a good game.

Considerable rivalry has existed between the Lynn High School and the Swampscott team for many years and because the head linesman came from Lynn Coach White was of the opinion that he was favoring the Lynn High School.

**LYNN ENGLISH. SWAMPSCOTT HIGH.** Doshon, le ..... re, McLearn Berger, Huber, Roderigue, lt ..... rt, Healy W. Murphy, lg ..... rg, Heath Blood, c ..... c, Page Fuller, rg ..... lg, Davis, Coleclough Young, rt ..... lt, Murphy, Newcomb Pierco, re ..... le, Ulman Chase, qb ..... qb, Pagnotti Harris, lhb ..... rbb, Santry Cunningham, rbb ..... lhb, Sperry, Pendernst Hadley, fb ..... fb, Current

Score—Lynn English 26, Swampscott 21. Touchdowns—Hadley 2, Current 2, Chase, Cunningham, McLearn Goals from touchdowns—Current 3, Young 2. Referee—Duffy. Umpire

# MARBLEHEAD TROUNCES LYNN ENGLISH HIGH

The speed and aggressiveness of Coach Pendleton's Marblehead High school football warriors together with their springing of surprises and the doing of the unexpected thing proved a combination of qualities that bewildered the Lynn English High school team at Evans park, Marblehead, last Saturday afternoon in a game that was captured by the local athletes 27 to 6.

The team that did that which Lynn Classical was unable to do, namely, gain a victory over Beverly High, was altogether too strong for Coach Sexton's outfit.

The real feature of the contest was the brilliant work of the entire backfield of the Marblehead High team. Particularly praiseworthy was the work of Sweetland. Marblehead's fullback whose playing both on the offense and defense was powerful and brilliant. The afternoon's show produced nothing finer than the all-around work of Sweetland.

Marblehead secured a touchdown in the opening quarter, when Eustis threw a neat forward pass to Tansy soon after Haskell had made a 30-yard run to English's 12-yard line, Tansy making it seven points by kicking the goal.

In the second period Coach Pendleton's performers gained another touchdown through a play that the Marblehead fans are still talking about.

Tansy, standing on his 18-yard line, was apparently getting ready to execute a punt, but to the amazement of the spectators was looking elsewhere than at the ball which had been thrown to him. To all appearances utterly unmindful of the fact that he was in a football game was Tansy until—the pass had gone beyond him as he may or may not have intended it should do, then he raced back about a dozen yards and, recovering the pigskin threw a pass of 40 yards to Howard Eustis, the clever Marblehead quarterback, carrying the ball over English's goal line, after a 45-yard run. Tansy kicked the goal making the score 14 to 0.

Haskell went over for a touchdown in the third chapter after he made a 20-yard run followed by a line buck, Tansy's effort to kick the goal being unsuccessful.

William (Mandy) Gillis, who is regarded in Marblehead as easily one of the finest tackles who ever performed on a football team representing the high school of that town, made the fourth touchdown for Coach Pendleton's outfit executing a 25-yard run, after having intercepted a forward pass.

This final touchdown for Marblehead was made in the fourth quarter with Lot Peach kicking the goal. In his last period also English speared its sole touchdown, the road to Marblehead's goal not being quite so hard to travel, as Coach Pendleton had sent in several second string players.

Coach Sexton's warriors forced the pigskin to Marblehead's one-yard line, where the local boys made a last ditch stand with success, the visitors being unable to get the ball over and were compelled to relinquish it. Marblehead's kick behind the goal line was blocked and Balkas recovered the ball, his effort producing six points. Young failed in his attempt to kick the goal.

Hadley at left halfback played a rattling good game for the visitors and Balkas performed in clever fashion. The splendid generalship of

tice.

Following is the summary:  
MARBLEHEAD. ENGLISH HIGH.

Peach, Campbell, le., re., Huber, Pierce  
Clay, Walton lt. .... rt., Young  
Doliber, lg. .... rg., Fuller  
Martin, c. .... c., Blood  
Reed, Snow, rg. .... lg., Murphy  
Gillis, rt. .... lt., Roderique, Balkus  
Hunson, Stone, re. .le., Deshon, Berger  
Eustis, Lewis, qb. .... qb. Chase  
Tansy, Colbert, lhb.,

rhb., Cunningham  
Haskell, rhb. .lhb., Hadley, Eldridge  
Sweetland, Kelley, fb. .... fb, Harris

Score—Marblehead 27 English 6.  
Touchdowns—Tansy, Eustis, Haskell,  
Gillis, Balkas. Goals from touchdowns  
—Tansy 2 Peach. Umpire—Morse.  
Referee—Birmingham. Linesman—  
Babcock. Time—10-minute periods.

## JOE TANSEY IS NOT OVER AGE

Marbleheaders Say Records  
Are Open—Will Be  
So Next Fall

Joe Tansy of Marblehead will be 20 years of age, Oct. 19, 1922. So say the reports in Marblehead Town Hall. There was controversy over the exact number of milestones the fighting Marblehead High school leader had passed, but now the question is settled once and for all.

Beverly raised the question, but when Marbleheaders offered to show the records at Abbot hall, Beverly took the word of the Marbleheaders.

Swampscott rooters had hoped that Tansy was 21 or more. In fact they wished he was through college or in Alaska, but the fact remains paramount that he will be in there Turkey Day morning, and look out for him! He's a fighting young dog, is Joe Tansy of the protruding aggressive jaw.

THE SALEM EVENING NEWS— NOVEMBER 16, 1921

# MARBLEHEAD ELEVEN TO PLAY REVERE HIGH AT SEASIDE PARK FRIDAY

# MARBLEHEAD HIGH WON SALEM CONTEST 10 TO 7

## Tansey's Runs Place His Team in Positions to Score; Salem Scored After Blocked Punt in Last Period

Salem and Marblehead High schools played one of the best school games of the year before 4000 people at Marblehead Saturday. Both teams played hard, fast football for the four periods and the Marbleheaders, with the aid of Tansey, earned a hard fought victory over the Salem team.

Tansey, the 135-pound halfback of Marblehead, proved that he has few equals as an offensive backfield man. His 50 and a 30-yard run through broken fields placed Marblehead in positions to score a touchdown and a field goal from the 35-yard line.

Salem's backfield showed a great improvement on the defense against the forward pass and Marblehead was only able to work one pass for any gain. Deschamps on end, Swenson at center and Wentworth in the backfield were the shining lights in the Salem team's play.

Marblehead kicked off to Salem and the local team failed to make the distance and it was Marblehead's ball in mid-field. On the first play Haskell got through the line, and was clear when he slipped and lost the opportunity to score. On the first rush Salem was offside and Marblehead got first down. Sweetland bucked center for four yards and Tansey skirted his own left end for first down. Haskell made eight yards through the line and Eustis gave Marblehead first down on Salem's nine yard line. On two rushes Marblehead lost five yards, a forward failed. Salem took the ball on the 10-yard line. On two rushes Wentworth made nine yards and Dooley punted to midfield. Marblehead worked the ball to the 11-yard line and on a split play an uncompleted forward pass over the goal line, passed Salem the ball on the 20-yard line. On the first rush Salem's backfield was caught using their hands and Salem suffered a 15-yard penalty. Dooley gained eight yards and then punted to his own 30-yard line. Marblehead gained a yard on a line buck. Tansey threw a forward to Stone which just

grazed his fingers. Tansey failed to make a drop kick. Salem's ball on her own 20-yard line. Salem could not gain and punted to Tansey. Marblehead lost a yard at right end and then failed to completed a forward, Wentworth knocking it down. Tansey punted over the goal line. On the next rush Clay of Marblehead was hurt throwing Dooley for a four-yard loss. Walton took his place. Salem punted and Marblehead fumbled, giving Salem first down in midfield. Wentworth, on two rushes, gained nine yards and Ulrich made first down. Wentworth made six more and Ulrich gained two yards. Bernie Wentworth, with a 15-yard gain, gave Salem a first down and placed the Witches in scoring position. Kaplan tried a forward to right end which Tansey intercepted and ran back to his own 35-yard line. The Headers could not make their distance and punted to Salem. End of half, Salem 0, Marblehead 0.

In the third quarter Marblehead started with a rush. Tansey made a 45 yard run and the Headers took the ball to Salem's five yard line where the Witches held for three downs and on the fourth try Eustis carried the ball over. Sweetland kicked the goal.

Salem kicked to Peach who returned the ball 10 yards. Tansey again broke loose and ran 30 yards. On a series of bucks the Headers carried the ball to Salem's 35 yard line where a forward pass failed and Salem took the ball. Dooley punted to midfield and Chaurette took Kaplan's place. End of period. Marblehead made it first down on Salem's 25 yard line. Swenson blocked a drop kick which Eustis recovered. Haskell carried the ball in front of the goal post and Tansey made a pretty field goal from the 30 yard line, which would have carried 10 yards further.

Salem kicked off to Peach who fumbled, Salem recovering. The Witches seemed to have a new lease of life. Welsh took Dooley's place, Gorman went to quarterback with Chaurette at full. This combination proved

successful and the Witches carried the ball to within scoring distance. A forward pass was thrown over the goal line which Marblehead knocked down giving them first down on their own 20 yard line. Marblehead could not gain an inch and on the fourth down Tansey's punt was blocked by Swenson. Salem seemed like a different team and on line plays Chaurette carried the ball over. Gorman kicked the goal.

Gorman kicked off to Marblehead but the Witches fought hard and the Headers could not gain. The game ended with the ball in Marblehead's possession on their own 35-yard line.

The summary:

|              |              |
|--------------|--------------|
| MARBLEHEAD   | SALEM        |
| Peach le     | re Deschamps |
| Clay lt      | rt Walke     |
| Walton lt    |              |
| Doliber lg   | rg Connors   |
| Martin c     | c Swenson    |
| Reed rg      | lg Sheridan  |
| Gillis rt    | lt Fish      |
| Stone re     | le Dane      |
| Eustis qb    | qb Kaplan    |
| Tansey lhb   | qb Gorman    |
| Haskell rhb  | rb Wentworth |
|              | lhb Dooley   |
|              | lhb Welsh    |
| Sweetland fb | fb Ulrich    |
|              | fb Chaurette |

Score, Marblehead 10, Salem 7. Touchdowns, Eustis, Chaurette. Goals from touchdowns, Tansey, Gorman. Goal from field, Tansey. Referee, O'Brien. Umpire, Butterfield. Linesman, Gordon. Time, 15m periods.

### Marblehead-Salem Game Notes

The game was very hard fought and cleanly played.

Marblehead is not a one-man team but is made up of 11 well coached boys who play as a unit, thus making it possible for Tansey to shine.

Sweetland the Marblehead fullback, plays head up football and is in on every play.

Little Deschamps often nalled the Marblehead backs behind the line for losses during the game.

The work of the Salem backfield in break up plays reflects great credit on Coach McDevitt.

Wentworth was Salem's best offensive back, and seemed to be able to gain every time he was given the ball.

Marblehead brought a band to the field, but in the last five minutes of play it began to look as if Salem could make use of it.

The playing surface was excellent. Tansey, the Marblehead flash, only weighs 135 pounds which proves that brains, grit and speed will make a good half-back.

DECEMBER 4, 1921

BOSTON SUNDAY GLOBE

## TANSEY FEATURES IN MARBLEHEAD'S WIN

Beats Salem High Eleven at Seaside Park, 10-7

### Open Play Succeeds After Failure to Pierce Visitors' Line

Special Dispatch to the Globe  
MARBLEHEAD, Dec 3.—Two 30-yard runs by Tansey and a goal from placement in the third period of the game between Marblehead and Salem High teams at Seaside Park this afternoon, spelled defeat for the Salem aggregation.

With two minutes to play in the final period of the game a blocked kick gave Salem the ball on Marblehead's 10-yard line, which resulted in a touchdown, making the final score of the game 10 to 7, in favor of Marblehead.

Marblehead, unable to pierce Salem's line, was forced to resort to open play, which upset Salem.

Salem's only gains were made through the line. Martin at center, Gillis right tackle, with Sweetland, Tansey, Eustis and Haskell played well. Dooley and Welch starred for Salem. The summary:

|                |              |
|----------------|--------------|
| MARBLEHEAD H S | SALEM H S    |
| Peach le       | re Deschamps |
| Clay lt        | rt Walke     |
| Walton lt      |              |
| Doliber lg     | rg Connors   |
| Martin c       | c Swenson    |
| Reed rg        | lg Sheridan  |
| Gillis rt      | lt Fish      |
| Stone re       | le Dane      |
| Eustis qb      | qb Kaplan    |
| Tansey lhb     | qb Gorman    |
| Haskell rhb    | rb Wentworth |
|                | lhb Dooley   |
|                | lhb Welsh    |
| Sweetland fb   | fb Ulrich    |
|                | fb Chaurette |

Score, Marblehead H. S. 10, Salem H. S. 7. Touchdowns, Eustis, Chaurette. Goals from touchdowns, Tansey, Gorman. Goal from field, Tansey. Referee, O'Brien. Umpire, Butterfield. Linesman, Gordon. Time, 15m periods.