

MARBLEHEAD

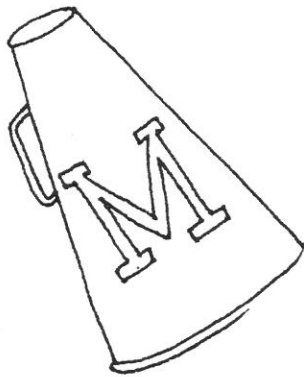
SUPPORT

MARBLEHEAD FOOTBALL



1943 (6-4-0)

George Moriarty was head coach for first three games. When he left for duty with the U.S. Navy, Ralph Hewitt became acting coach for the remainder of the season.



| | | |
|-----|--------------|----|
| 0 | Peabody | 6 |
| 0 | Amesbury | 19 |
| 9 | Salen | 0 |
| 31 | Newburyport | 7 |
| 13 | Gloucester | 0 |
| 33 | Danvers | 0 |
| 20 | Lynn English | 6 |
| 19 | Beverly | 0 |
| 6 | Saugus | 7 |
| 0 | Swampscott | 32 |
| 131 | | 77 |

1943

Larkin Hopes to Play for 'Headers

Main cog in the 1943 Magic Makers backfield wheel, Jackie Larkin, who was discharged this week following a long illness in the hospital is headed for New Hampshire in the hopes of picking up 28 pounds of beef which he lost in his recent tussle with virus pneumonia.

Upon Jackie will fall the toga of his husky brother Davey, who not only performed ably in the forward wall but was a capable leather lugger and ball toter. Jackie is a little bit more versatile than Davey, for Coach Moriarty used him last season in various capacities although his main forte was hog hide rustling.

Larkin cavorted as a wingman in 1942 and also was moved into guard when Coach George required a stalwart replacement. If Larkin rounds into condition before the curtain raiser the chances of the Moriarty men will be greatly improved.

Gene Girouard will not be seen in uniform this season, according to the Red and Black mentor, which means that the Magic Makers have lost one of the top flight flankmen of the North Shore. Rolfe who was probably the cream of the Junior High crop in 1941, did not report for the varsity last fall.

In the opinion of Coach Frank James, who developed Rolfe from elementary school days, the lad was the most promising player on the eleven, excelling in punting, passing and running. Shortly before the team departed for training camp last season he was stricken ill. He received Dr. Stanford Hopkins' sanction to resume football this summer.

The fall training camp appears out of the picture, Coach George Moriarty says, but he will start work in preparation for the Peabody contest Aug. 21.

Marblehead May Lose Grid Coach

MARBLEHEAD, Aug. 10—The School Committee, faced with the task of locating an assistant football coach by Sept. 1, learned today that it may also be forced to branch out and nail a head grid coach, according to a statement by Tracy Sanborn, chairman of the School Committee.

Assistant coach Elmo Benedetto left for the Army shortly after the 1942 grid season, leaving that job wide open. Now, head coach George Moriarty has again signified his intentions of securing a commission in the Navy.

Head coach Moriarty was accepted by the Navy some time ago, as physical instructor with a rating of lieutenant, (jg), but as there were no vacancies at the time, he was not sworn in. At the present time, he is seeking a commission in another branch of the Navy.

Moriarty, former star quarterback of English's state championship eleven and varsity play-caller at Notre Dame, has been at Marblehead for three full football seasons. In that short stretch, he has put out some fine grid teams, elevens that ranked high in the state ratings.

Marblehead to Train Squad at Foxboro

Financially well off compared to other North Shore grid clubs, Marblehead High Magicians will probably undergo preliminary training again this summer at Foxboro, according to the present plans of Coach George Moriarty.

The draft left the Red and Black in better shape than most of its opponents. Jack Barry, back, and Bill Bray, veteran guard, are wearing Uncle Sam's uniforms.

Coach Jack Heaphy of Dedham and Moriarty are in constant communication on the training camp. For three years the Dedhamites and the Red and Black have worked out at the camp together. Marblehead High opens the season six weeks from next Saturday with Peabody providing the opposition. Coach George says it reminds him of the gentleman who recently figured there were only 140 days remaining to do his Christmas shopping.

Spring training showed that Coach Moriarty has another hand-picked club although Bray and Barry will be hard to replace. Ross will plug the hole in the frontier left by Bray.

Geo. Moriarty May Enter Service

With a strong probability that Coach George Moriarty, Marblehead magic mentor since 1940, may enter the armed service some time this fall and a vacancy to be filled in the assistant coaching department, owing to the loss of St. Elmo Benedetto, now with the colors, the school board has quite a problem to consider, Committeeman Tracy L. Sanborn, chairman of education, announced this morning.

If Moriarty signs up, a vacancy will be created not only in the head coach's berth, but in basketball baseball and the teaching of physical education, berths which he has taken over while Coach Trem Roberts and Coach Howard Eustis are on duration leave.

The school board is now considering applications for the assistant coaching post and for a possible successor to Coach Moriarty if he enters the service.

Since Gentleman George assumed the grid reins at the Red and Black school following the departure of Coach Charlie McGuinness, he has had marked success. His edition last fall went through the season undefeated and numbered among its victims some of the crack North Shore clubs. Hal Martin's Sculpin club gave the Magic Makers their toughest battle in the annual Turkey Day tilt.

The Moriarty clubs previously had never dropped more than two games a season playing an 11-contest card. Coach Moriarty has also introduced many extra-curricular activities, one of the most popular being his annual grid follies.

Farewell Party

Marblehead Magic Makers who are about to start running the ball for Uncle Sam were given a party Saturday night at the home of Curtis Noyes, Glendale road, who as assistant coach, member of the board of strategy and athletic Grover Whelan of the township, has endeared himself to the gridsters.

If the Magicians perform on the battle field as they did while wearing a red and black uniform, and they certainly will; the old township may well be proud of them. They were undefeated last season and have made remarkable records under the regime of Coach George Moriarty. Grid pictures of the Magic Makers the past three years were shown and a supper enjoyed.

Honored were Capt. Jack Brady, Edward Barry, and his brother Jack, Bill Bray, Bob Riely, Dick Murphy, Frederick Jewett, Bob Magee, Bill Cunningham, David Larkin, Daniel Sullivan, Wilson Remick and Richard Trefry.

Other guests were Coach Moriarty, former School Committeeman Charles Phelan, Edward Barry, Sr., "Bud" Kelley and Capt. John "Chipper" Chapman, the latter two returning to the 1943 grid edition.

Geo. Moriarty Accepted by U. S. Navy

Completing the demolition of the Marblehead High school coaching staff which has already sent three men to the armed forces Coach George Moriarty has signed on with the U. S. Navy and may be wearing a uniform before the Magic Makers' curtain raiser with Peabody, Sept. 18.

George received word from the Navy department that he had been accepted yesterday and was ordered to report next Monday to take the federal oath. He will re-

ceive a commission as gunnery officer but has not been notified as yet as to his rank.

Preceding George into Uncle Sam's service have been Coach Trem Roberts, baseball; Coach Howard Eustis, basketball and St. Elmo Benedetto, assistant grid mentor.

Coach Moriarty piloted the 1930 Lynn English High eleven to a state championship, matriculated at Clark prep at New Hampshire and completed his education at Notre Dame. He coached at Racine and LaCrosse, Wis., before coming to Marblehead three years ago.

He has kept up the high standard of football for which the ancient village is famed, losing only two games his initial season, dropping four out of 13 in 1941 and pro-

ducing an undefeated club last season.

The school board has lines on two promising candidates for the duration appointment. Chairman Gregory Lyon announced last night but hopes that with the berth definitely open more applications will be received.

Until he reports to active duty the grid mentor will continue work with the squad and is optimistic that he may be in charge for a couple of early season games in order to help his successor.

WAR FINANCE BOARD

To make plans for the Third War Loan, which will be raised from Sept. 9 to Oct. 2, the Lynn War Finance committee will meet at Prichard hall, Exchange street, Friday at 3 PM.

Ralph Hewitt Reports to Moriarty

With Coach Ralph Hewitt, former All-American field general for Lou Little's Columbia eleven reporting for duty yesterday the Magic Maker were put through an intensive drill at Coach Moriarty's Pine Knoll Camp, Wenham. The Magicians and Peabody will collide at Leo Buckley Stadium, Sept. 11 in the curtain hoister of the entire North Shore.

Hewitt, a genial gent with a winning smile, appears to click with the Moriarty men and George is cramming him stock full of information anent his charges as he will take over the reins in the near future when Moriarty enters the Navy. George took the Federal oath in Boston yesterday afternoon and was commissioned a lieutenant (j.g.)

Replacements at the Red and Black school are pretty slim although a capable eleven is ready to be fielded. Jimmy Jordan, veteran tackle, although under the induction age is ambitious to enter the global war although he may be induced to defer his career in the armed forces until the season closes. Tommy and Albert, Jimmys brothers, are in uniform and the stalwart tackle would like to make it 100 per cent. at the Jordan house.

Moriarty is again stressing the T formation this season and with Brock Hayes at quarterback handling the hog hide has evolved some very tricky combinations. Jackie Larkin, recently discharged from the hospital, is perking up rapidly and may be in the tailback slot for the opener. Robert Ross is also being primed for this post. The elusive Captain John "Chipper" Chapman, punter, passer and runner, looks in mid-season form.

Hewitt to Coach Football at 'Head

Former Columbia Star Succeeds Moriarty When He Enters Service

By FRED FOYE

Marblehead High will lose its four-year football coach some time within the next six weeks but that does not mean that the school's team is destined for a losing season after he goes. George Moriarty is the coach awaiting call to active duty as a Naval Lieutenant (jg) but he has planned so well that the Magicians should roll along just as if he were

'HEAD OPENS SEASON

SEPT. 11 WITH PEABODY

Marblehead will play its opening game with Peabody Sept. 11, thus jumping the starting gun on most of the football schools by at least two weeks, but if that opener were to be played tomorrow, Moriarty and his Magicians would be ready. Even now he can name a starting line-up.

Marblehead is one of those schools placing heavy emphasis on football and is was only natural that the groundwork for the 1943 team should be laid last spring. The schedule called for three days of football and three days of baseball, so while other schools were concentrating wholly on baseball, the 'Headers were piling up three solid weeks of spring football practice. The sessions were crowned with two torrid scrimmages against Melrose, the 1942 Class B champions.

Three of the regular starters in those spring sessions enlisted in war service this summer, following the lead of their coach, but even that won't weaken Marblehead's prospective strength, for Moriarty is able to offer many others as replacements.

Another reason for optimism on the Marblehead football front is the unhesitant naming of Moriarty's successor, who will step in as head coach the day Moriarty is called to active duty. He is Ralph Hewitt, a big name in school and college sports in these parts until he dropped out of active stardom in 1932.

HEWITT AIDED LITTLE WITH COLUMBIA ELEVEN

He was captain of baseball and football at Lawrence High, 1926, captain of baseball and football at Columbia, class '32. He toured the country from 1932 until 1936 doing field work for Warner Brothers (the movie folks), and he returned to sports in 1936 for four years assistance to Lou Little at Columbia.

Hewitt is working with Moriarty as assistant, but he'll be Marblehead's head coach of all sports for the duration when Moriarty moves out.

The three regulars who answered service calls are Gene Girouard, right end, Jack Barry, quarterback, and Bill Bray, right guard. Still another is expected to enlist shortly, Jim Gordon, left tackle.

The departure of that fine nucleus would be enough to wreck the ordinary squad, but not Moriarty's Magicians. There's either a regular, a letterman or a trained substitute for every position, and two or three for most positions.

As a starter, Moriarty is able to

backs, the starters all lettermen. The first quartet, all returning regulars, is Brock Hayes, quarter; Bob Ross, fullback; John Larkin, right half; and Capt. John "Chipper" Chapman, left half. The No. 2 backfield is Frank Tuxbury, Don Sweetland, Bill Rolfe and Peter Barry.

FIVE LETTERMEN AVAILABLE IN LINE

At least five lettermen are available in the line, so there will be no tears for that department. Charley Prince, for instance, won a letter as a sophomore last season, and he'll anchor the wall at center.

Bob Cunningham, a senior letterman, will be left guard, but the right guard post is being disputed among three newcomers, Mel Hamson, Bob Osgood and Ed Shea.

Fred Lewis and Jim Jordon are back as regular tackles, but if Jordon is called to war service, then Prince may shift from center to fill in at tackle and be replaced at center by Hamson, one of the guards.

Charley Kelley, a regular, also returned to left end, and there are four newcomers still disputing the right end berth, Cliff Winter, Don Andrews, George Goodwin and Bill Brown.

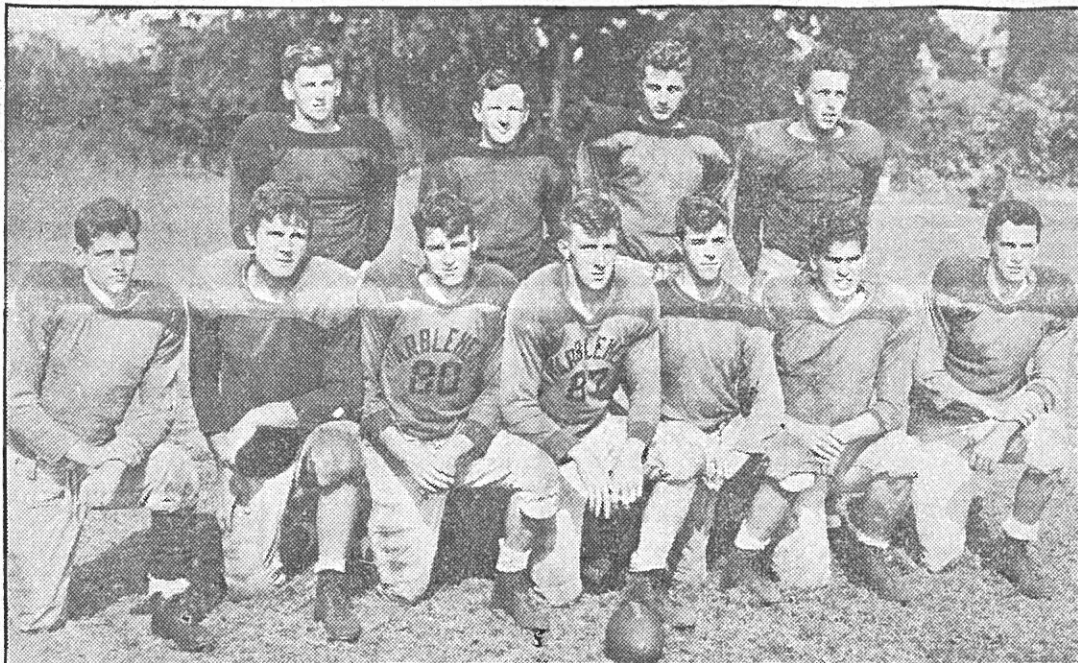
Do not weep, therefore, for the football Magicians of Marblehead. They are bidding farewell to a fine coach, but they have gained still another fine coach to take his place. And from all indications Marblehead High will be represented this season by a traditionally great team.

Baseball Heads Plan All-Star Trip Abroad

CHICAGO, Aug. 26 (AP)—American soldiers overseas soon may see not only one but a series of major league all-star games if a proposed tour of Allied military bases in the European theater of war is approved.

William Harridge, American League president, and Ford Frick, president of the National League, will discuss the project with Baseball Commissioner K. M. Landis tomorrow.

Harridge said he understood the War Department had okayed the tour in the interest of entertainment, but the War Department, when questioned, said "no comment." Major leaguers chosen would start overseas after the world series, Harridge inti-



'HEADERS READY TO OPEN SEASON — Marblehead starts its schedule tomorrow at Peabody at 4 P.M. and it may be the last appearance of Lieut. George Moriarty as coach for he is likely to be called into Naval service Monday. The 'Headers will as usual show a good team. The probable starting lineup, from left to right is: First row—Gene Girouard, Sam Likens, Bob Cunningham, Charley Prince, Bob Ross, Fred Lewis and Bud Kelley. Back row—John Larkin, Don Sweetland, Brock Hayes and Capt. Chipper Chapman.

'Head-Peabody May Sever Relations

Possibility that athletic relations with Peabody High gridgers will again be severed by Marblehead, is foreseen as a result of the ruckus now going forward as to the site of the annual Tanner-Magic Maker battle, next Saturday afternoon, with Coach George Moriarty dissatisfied with the condition of Leo Buckley stadium in Peabody.

Coach Moriarty made another survey of the Tanners' stadium last night and the Marblehead mentor stated that he was taking no chances of his charges being injured because of the poor playing surface even if the Tanners were waving the flag anent home games and the impossibility of national defense workers reaching Bertram field (Salem) in time to witness the opening kickoff.

Moriarty proposes to switch the game to Bertram field (Salem) and has the backing of the school board. As the result of a conference with his committee last night the Marblehead mentor has suggested that the two team physicians make an appointment today when another survey of the field will be made and that the two clubs abide by the decision of the medicos. Marblehead scratched Peabody from its card several years ago as the result of an unfortunate episode while the two

'Headers Open Tomorrow In Peabody

To keep peace in North Shore grid circles, Marblehead school authorities have agreed to fulfill their contract with Peabody and the Magic Makers and Tanners will collide tomorrow afternoon at Leo Buckley stadium. The kickoff is at 4.

Athletic Chairman Dr. Stanford Hopkins, however, is not in entire accord with the situation but since tomorrow's contest terminates a two-year agreement with the Seeglitz men he has made a pledge to local grid rooters that the new document which will come before the school board for renewal in the near future, will impose entirely different terms.

Dr. Hopkins believes that in fairness to Marblehead fans, the new contract should call for a brace of contests being played at Reynolds' stadium. The Magic Makers, for two consecutive years since amicable relationships were resumed with the Tanners, have performed at Peabody. The Red and Black club has never encountered difficulty in filling its card with teams having a large following.

Lieut. Moriarty Sees 'Headers Win on Grid

One of the most interested fans at the Magicians-Clippers grid struggle at Marblehead Saturday was Lieutenant Geo. Moriarty, United States Navy. George sat on the bench and watched his former charges trounce Newburyport, as they pushed over their initial decision for Ralph Hewitt who is handling the football reins.

Magicians Too Strong for Clippers

Brock Hayes' 92-yard scoring center after intercepting Sumner Haley's pass curbed a serious scoring threat in the initial canto upset Newburyport High eleven and paved the way for the Marblehead Magic Makers to win 31 to 7 Saturday afternoon at Reynolds' stadium.

Although the Marblehead backs scintillated as they chalked up the large score against their guests, the forward wall deserves the glory. The Red and Black frontier blasted the Joppa Town line apart and created huge holes through which the ball carriers easily made their yardage. The assault was concentrated on the right side of the Newburyport line and three guards who spelled each other were helpless to stem the torrent.

The 'Headers counted a touchdown in the first, two in the second and two in the third and then called it a day, after Brock Hayes made the only conversion by dropkick. Hayes and John "Chipper" Chapman led the scoring parade crossing the ultimate stripe twice each while Jack Larkin, in addition to giving excellent blocking to the other hoghide hustlers also recorded a count.

The Joppa Towners turned on the steam in the third chucker and after working the ball down field Ed Lazon took Haley's pass over the shoulder for a 25-yard scoring jaunt. The summary:

MARBLEHEAD (31)—Kelley, Parker, le; Lewis, Murphy, lt; Hanson, Chrowtowski, lg; Prince, c; Cunningham, Osgood, rg; Hazeltine, Underhill, rt; Andrews, Goodwin, re; Hayes, Barry, qb; Chapman, Rolfe, lhb; Larkin, Tuxbury, rhb; Ross, Sweetland, Shea, fb.

NEWBURYPORT (7)—Lazon, Cohen, re; Sadowski, rt; Potter, Chapin, Colby, rg; Walsh, Cashman, c; Manterian, lg; Rolfe, lt; Twomey, le; Brown, qb; Foley, rhb; Haley, lhb; Zafris, Mitchell, fb.

SCORE—Marblehead 31, Newburyport 7. Touchdowns—Hayes 2, Chapman 2, Larkin, Lazon. Points after touchdowns—Hayes (placement), Haley (placement). Referee—Leavitt. Umpire—Cronin. Linesman—Crowley. Field judge—Cody. Time of periods—Eight minutes.

EASY VICTORY FOR MAGICIANS

Marblehead Wins by 31 to 7 Score on Home Lot

MARBLEHEAD NEWBURYPORT
Kelly, Parker, le re, Lezon, Cohen Lewis, Murphy, lt rt, Sadowski Hanson, Charlowski, lg

rg, Potter, Chapin, Colby Prince c c Welch, Cashman Cunningham, Osgood rg

lg Manterian Hazeltine, Underhill rt . lt Wolfe Adrews, Goodwin re . le Toomey Hayes, Barry qb qb Brown Chapman, Ross lhb . . rhb Foley Larkin, Tewksbury rhb lhb Haley Ross, Shea, Sweetland fb

fb Zefris, Mitchell
Score: Marblehead 31, Newburyport 7.

Touchdowns: Hayes 2, Chapman 2, Larkin, Lezon.

Goal after touchdown: Hayes, Haley (by placement).

Displaying all the versatility that marked Marblehead teams of other years, a strong offensive running Black eleven passed and smashed their way to a 31-7 triumph over the lads from Joppa Town at Joel Reynolds stadium today. After Brock Hayes, fleet-footed quarterback, had intercepted an enemy aerial on his own two-yard line and raced 98 yards for the first Marblehead score, midway in the first period Marblehead was never threatened. Time and again the Mariners great line paced by Bud Kelley stopped Newburyport drives and threw their back for losses. Time and again this line opened up holes for the driving backs to pass through for touchdowns. With Capt. "Chipper" Chapman scoring twice on runs of 38 and eight yards, and Hayes also scoring twice on a center buck and a 98-yard run, and Johnny Larkin running eight yards through tackles to score, Marblehead put on a great offensive show for the 1200 fans that were present..

Newburyport threatened only once, early in the first quarter, when on a sustained march with Zafris and Haley alternating in rushing and Haley passing first to Brown a dn ht etoLzen, o y-r Brown and then to Lezon, the Red and Orange went 55 yards to Marblehead's 1 ft line, before Hayes intercepted.

'Headers Tip Porters, 31-7

Make It Happy Debut for Hewitt

MARBLEHEAD, Oct. 9—Marblehead High made Ralph Hewitt's coaching debut a success by scoring five times in the first three periods to overwhelm Newburyport High 31-7, at Reynolds Field today. Hewitt succeeded George Moriarty who joined the Navy last week.

Brock Hayes and Johnny Chapman with two touchdowns each and Johnny Larkin with one accounted for the Marblehead scores while Ed Lazon tallied for Newburyport.

Hayes started the scoring parade by intercepting a pass and racing 98 yards for a touchdown. After that it was a rout. Hayes tallied again on a quarterback sneak, Chapman scored on a 30-yard run and a short plunge and Larkin went over on an 18-yard sprint.

Lazon made the Newburyport score on a 20-yard end sweep.

MARBLEHEAD HIGH (31)—Left end, Kelley, Parker; lt, Lewis, Murphy; lg, Hamson, Chrowtowski; c, Prince; rg, Cunningham, Osgood; rt, Hazeltine, Underhill; re, Andrews, Goodwin; qb, Hayes, Barry; lhb, Chapman, Rolfe; rhb, Larkin, Tuxbury; fb, Ross, Sweetland, Shea.

NEWBURYPORT HIGH (7)—Left end, Lazon, Cohen; lt, Sadowski; lg, Potter, Chapin, Colby; c, Walsh, Cashman; rg, Manterian; rt, Rolfe; re, Toomey; qb, Brown; lhb, Foley; rhb, Haley; fb, Zafris, Mitchell.

| Periods | 1 | 2 | 3 | 4 | Total |
|------------------|---|----|----|---|-------|
| Marblehead High | 6 | 12 | 13 | 0 | 31 |
| Newburyport High | 0 | 0 | 7 | 0 | 7 |

Touchdowns—Hayes 2, Chapman 2, Larkin, Lazon. Points after touchdown—Hayes, Haley.
Referee, Leavitt; umpire, Cronin; linesman, Crowley; field judge, Cody. Length of periods—10 minutes.

Marblehead Sails Over Salem, 9-0

By ED EARLE

SALEM, Oct. 3—The Marblehead High Magicians recover their lost magic and sparked for the first time with story book trimmings in trimming favored, unbeaten Salem High, 9 to 0, this afternoon at Bertram Field before a crowd of more than 5000. The Marbleheaders, previously trounced in two games this season came through with a grand farewell for their Coach George Moriarty, who joins the Navy this week.

HEADER MISCE

PAVES SCORING PATH

Capt. John "Chipper" Chapman, who rode roughshod over the Witches last year, and John Larkin were supported by a spirited crew of Yachtsmen who threw blocks and tackles all over the lush green, rolling up eight first downs to two and rushing off 284 yards to 75 for the opposition.

A Marblehead miscue was turned into the touchdown drive in the middle of the second period at midfield. Chapman went back to kick on fourth down. The pass from center was fast and the Marblehead skipper dropped the ball, picked it up and circled right end for a first down on the Salem 34. Larkin shot through center and was brought down on the nine-yard line on a great tackle by Capt. Lonny Shea of the Witches. Chapman was stopped, but the 'Headers turned to air, with left end "Bud" Kelley making an over-the-shoulder clutch in the end zone for the touchdown.

Hayes added the extra point as he tropkicked the ball high and handsome over the crossbar.

Hayes continued to make hay in the fourth period when he ran back the Salem kick 35 yards to the Salem 4 with the way cleared by a typical arkin block. Chapman sailed left end for five yards and two, carried by Larkin made a first down on the free. An offside penalty shoved back the Yachtsmen and then Salem covered on the four. Joe Morris, dem reserve, attempted to rush and n into a seawall of red jerseys to say in the end zone for a safety id two points more for Marble-

ad. Marblehead High (9)—Le, Kelley, Andrews; lt, Hazeltine; lg, Hamsen, Krostowski; c, Prince, Krostowski; rg, Cunningham; rt, Lewis; re, Girouard; qb, Hayes, Barry; lhb, Chapman; rhb, Larkin, Tuxbury; fb, Sweetland, Ross. LEM HIGH (0)—Le, Vallis; lt, Cappuccio, Briggs; lg, Tassanari; c, Conway; rg, Smith, Winer; rt, Dombrowski, Sarkisian; re, Dion, Jaworski; qb, Dooley; lhb, Longval, Lynn; rhb, Shea, Morris; fb, Pasarek, Francki, Gracyk, Fabiszewski.

| | | | | |
|------------|---|---|---|-----|
| Periods | 1 | 2 | 3 | 4 |
| Marblehead | 0 | 7 | 0 | 2-9 |
| Salem | 0 | 0 | 0 | 0 |

Touchdown—Kelley (10-yard pass). Point after touchdown—Hayes (dropkick). Safety—Larkin. Touchdown—Norris. Point after touchdown—Norris. Referee—Tim McAuliffe. Umpire—Paul Crehan. Linesman—Mark Crehan. Field Judge—Ed Leavitt. Time—10 minutes.

REWEAVING COACH

After a fumbling start, Marblehead went from its own 29 to the Salem 33-yard line in the first period, with Chapman rounding the ends, Larkin shooting off tackle and Hayes executing quarterback sneaks. Both teams played a duplicate formation, but Marblehead had a decisive edge in fast backs. . . .

Marblehead High Will Not Continue Sunday Football

Marblehead, Oct. 5—The Marblehead school committee made it clear today that Sunday football is out for the Magic Makers, with Chairman Gregory O. Lyons stating that the contest with Salem was played only because of weather conditions, which forced a postponement. As predicted by the school board when it banned football on the Sabbath last year, the majority of the grid squad was absent from sessions yesterday. Principal George P. Campbell stated, a situation he believed to be common with schools staging contests on Sunday. The Marblehead school board sees no moral issue involved in Sabbath games. Chairman Lyons says their action last year was motivated only through consideration of the physical welfare of the gridriders. The committee was not influenced in its decision by fear of becoming an "outlaw" school. When the board turned thumbs down on the proposal in 1942 it went on record as saying Sunday games would unfit players for classroom work Mondays.

Surprising Marblehead High Gave Salem First Defeat 9 to 0

A battling and considerably under-rated Marblehead High eleven rushed and passed their way to a 9-0 victory over Coach Glenn O'Brien's Salem High team before another large Sunday crowd at Bertram field yesterday afternoon, to ring up their first win of the season as a farewell gift to Coach George Moriarty, who leaves this week for induction into the armed forces. While the home team never seriously threatened the 'Headers' goal line, they kept in the fight every moment of the way, and fans left the game convinced they had witnessed a good football game between two hard-hitting clubs.

After a faltering start, in which the 'Headers' twice lost the ball on fumbles in the first five minutes of the game, the Moriarty men let loose with a sweeping offense built around Capt. Chipper Chapman's fleet skirting of the ends, aided by some first-class blocking by Larkin and Sweetland that brought two 12-yard gains on successive plays. This attack, which started on the 'Head 30-yard line, was finally checked on Salem's 28, but the visitors were not to be denied, and a few plays later were again in possession of the ball in midfield.

Chapman, about to punt on a third down, received

A Bad Pass

from center, and after momentarily fumbling the ball, headed toward the sideline, and outdistanced the Salem linemen, who were in fast, he carried to a first-down on Salem's 34. On the next play Larkin swept around end, this time receiving the support of Sweetland, and was not halted until pulled down by Capt. Lenny Shea on the Salem eight. Chapman lost a yard as Salem linemen drove hard on the next play, and then Hayes dropped back and threw a perfect pass over the left side of the line, which Bud Kelley took over his shoulder in stride, to cross the goal line for the initial score.

Hayes kicked the goal, electing to drop kick, and giving the ball such a boot that it not only cleared the crossbar with yards to spare, but went out of the field to the neighboring hillside. The kick would easily have been good from 10 yards farther back, a feat in High school football these days.

With the half nearing an end, the Salem offense took to the air, but with none of the success it enjoyed against Lynn English a week ago. The 'Head linemen were in too fast, and the passes went wide of their mark, or when they did connect there was always a 'Head secondary on hand to bat the ball down, and the half ended with the ball near midfield.

The visitors again showed a strong offense as the second half opened. Chapman taking the kickoff back 30 yards, and Larkin following with first down on Salem's 40-yard marker. Dooley then intercepted a Marblehead pass meant for Larkin on the 20, but the officials ruled he was

Outside the Field

when he caught it, and after the play was called back, Chapman kicked to the 20. Longval quick-kicked back to Marblehead's 40, and on the next play as Larkin made two yards. Vallis broke out of the pileup and started down the field with what Salem fans thought was a recovered fumble. He was called back after crossing the goal line, much to the disgust of one Salem rooter, who dashed onto the field and began arguing with the of-

ficials. He was led, protesting, to his seat by police and several of the Salem players.

Late in the third period Pesarek, emulating Chapman's run from kick formation, went 22 yards from his own 35 a few minutes after Capt. Shea had intercepted a Marblehead pass. The first down provided only a few moments of cheering for the home fans, for once again the Salem air attack was broken up and Marblehead took the ball on downs about midfield. Tuxbury broke away for two short gains, and then Chapman kicked out on the Salem 19. Longval punted back, and Hayes, aided once again by a perfect block by Larkin, ran it back from the midfield stripe to the Salem 14.

A series of plays carried to Salem's three-yard marker for a first down, but a penalty, followed by a fumble on the eight-yard stripe, gave Salem the ball. On the first play at least five 'Headers broke through and dropped Morris for a safety behind the goal line as he sought in vain to carry the ball from scrimmage, and the score read 9 to 0.

| | |
|--|----------------------------------|
| MARBLEHEAD | SALEM |
| Kelley, lb | re, Dion, Jaworski |
| Hazeltine, lt | rt, Dombrowski, Sarkisian |
| Krostowski, lg | rg, Smith |
| Hamsen, c | Winer |
| Prince, rt | c, Conway |
| Krostowski | |
| Cunningham, rg | lg, Tassanari |
| Lewis, rt | lt, Cappuccio, Briggs |
| Girouard, re | le, Vallis |
| Barry | |
| Hayes, qb | qb, Dooley |
| Chapman, lhb | rhb, Shea, Morris |
| Larkin, rhb | lhb, Longval, Lynn |
| Sweetland, fb | fb, Pesarek |
| Ross | rs, Fronski, Fabiszewski, Gracyk |
| Winning team, Marblehead, 9 7 0 2-9 | |
| Touchdowns—Kelley (on pass). Points by kick after touchdown—Hayes, (dropkick). Safeties—Morris. Referee—McAuliffe. Umpire—Paul Crehan. Linesman—Mark Crehan. Field Judge—Ed Leavitt. Time—Four 10's. | |

Notes

The press box held several visiting coaches, including Denney Gildea, whose Everett team plays here next week. Lt. "Marty" Donovan, U. S. A., former assistant Salem coach, and Ens. Harry Miller, U. S. C. G., former grammar school coach here, were also among the interested spectators.

Two 'Header players who were in considerable portions of the game never made the summaries, for their names were omitted from the program. They were 37 and 15, a back and an end.

While the Marblehead backs won the applause of the crowd for their spectacular running and fierce blocking, it was really the line that consistently outcharged Salem's forward wall that not only paved the way for the sweeping gains, but also consistently broke up Salem's offense.

Scribes had much difficulty with the Salem players' numbers, it being almost impossible from the press box to distinguish between 23, 28, and 26.

Coach O'Brien rushed on the field as the final whistle blew and personally took the ball from the officials and handed it over to the 'Headers. Several Salem players were also seen congratulating their opponents, an indication of the good spirit in the game despite its hard play.

The News office phones were so busy Saturday noon with queries regarding a postponement that Faculty Manager Joe Smith couldn't get a line, and had to come down personally to say the game was put over to Sunday. Once at the office, he assisted in handling the dozens of calls that came in from 1 to 2 o'clock.

'Headers Take No Pity on Danvers

As interesting as a Miss Jane Porter novel and just about as thrilling was Marblehead High Magic Makers' 33 to 0 verdict over a feeble Onion Town at eleven Saturday afternoon at Reynolds' stadium before a scant gallery. The Magicians made it 13 wins out of the current 15-game series with Danvers and recorded their fourth straight triumph of the season.

Without making a serious threat through the four chapters, the Vyemen had a bad afternoon as the Marblehead ball carriers ran rough shod through the blue-clad invaders and a clamor is on in the Yachting Capital today to replace Danvers on the 1944 card with a stronger opponent.

Establishing a commanding first-period lead, Coach Ralph Hewitt gave his reserves a good workout and incidently proved that in young Frankie Tuxbury he has a speed king that can swing the ends like a pendulum.

A fumble recovered by Charlie Prince and a blocked kick through the fast charging of Bob Cunningham and Paulo Hazeltine resulted in two Marblehead touchdowns late in the contest, but the 'Headers had the opposition well tamed by that time.

Captain John (Chipper) Chapman put the skids under the invaders in the initial canto when he slid through left tackle on a split buck to scamper 40 yards just after the clock had started. Chapman and Tuxbury combined with Hayes to grind out most of Marblehead's yardage and they ate up the turf in huge chunks. Bob Ross' line bucking was also a feature.

Ted Picillo was the spearhead of the Danvers attack but was given little coverage on his runs. Danvers' only threat came in the third period when the club rolled to the 10-yard marker and lost the hoghide on downs. The summary:

MARBLEHEAD (33)—Kelley, Parker, le; Hazeltine, Murphy, lt; Hamson, Chrowtowski, lg; Prince, Osgood, c; Cunningham, Kiely, Daggett, rg; Lewis, Underhill, rt; Andrews, Goodwin, re; Hayes, Barry, qb; Chapman, Shea, lhb; Tuxbury, Cross, rhb; Ross, fb.

DANVERS (0)—Sillers, re; McFarland, Spofford, Southworth, rt; Fraces, rg; Batchelder, Velcour, c; Morien, lg; Lynch, Collins, lt; Berry, le; Barnett, qb; Daley, rhb; Picillo, Begin, Parsons, lhb; Dzierzek, fb.

SCORE—Marblehead 33, Danvers 0. Touchdowns—Chapman 2, Tuxbury, Ross, Cross. Points—Chapman 2, Kelley. Referee—Barry. Umpire—Brawley. Linesman—Burnett. Field judge—Leavitt.

Danvers Easy For 'Headers Duxbury Sets Pace In 33-0 Runaway

MARBLEHEAD, Oct. 23—Scoring in every period, Marblehead High romped to a 33-0 triumph over Danvers High at Reynolds Stadium today. Frank Tuxbury scored twice for the Headers while Johnny Chapman, Al Cross and Bob Ross each scored once.

Marblehead iced the game by scoring twice in the first eight minutes. "Chipper" Chapman raced 41 yards for the first score and Tuxbury plunged over from the four-yard line for the second.

In the second period Ross romped 20 yards for a touchdown to be followed in the scoring column by Cross, who dashed 33 yards and Tuxbury, whose second touchdown came on a 10-yard sprint.

MARBLEHEAD HIGH (33)—Le. Kelly, Parker; lt. Hazeltine, Murphy; lg. Hamson, Chrowposki; c. Prince, Osgood; rg. Cunningham, Kiely, Daggett; rt. Lewis, Underhill; re. Andrews, Goodwin; qb. Hayes, Barry; lhb. Chapman, Shea; rhb. Tuxbury, Cross; fb. Ross.

DANVERS HIGH (0)—Le. Berry; lt. Lynch, Collins; lg. Moxien; c. Batchelder, Velcour; rg. Fraces; rt. MacFarland, Spofford, Southworth; re. Silers; qb. Barnett; lhb. Picillo, Begin, Parsons; rhb. Daley; fb. Dierzek.

Periods: 1 2 3 4
Marblehead..... 13 7 7 6—33
Touchdowns—Tuxbury 2, Ross, Chapman, Cross. Points after touchdown—Chapman 2, Kelley. Referee—Barry. Umpire—Braulen. Linesman—Burnett. Field judge—Lovett. Time—Four 10-min. periods.

Marblehead to Tress Speed at Fishtown

With an attack moulded to by-pass Curley, mainstay of the Fishtown defense the Magic Makers invade Gloucester this afternoon where they will collide with the Frigaard coached club at Newell stadium.

After scouting the Fishermen last week, Coach Ralph Hewitt decided at the decision the way to win yardage against the Gloucester men is to keep away from Curley and the Marblehead mentor replacing Jack Larkin with the weight Frahk Tuxbury at right half, the speediest lad on the Red and Black.

Tuxbury, a sophomore 135-pounder, is as fast as that mighty mule atom, Stacey Clark, who won the title of the speed king along the North Shore five years ago. The one he will serve as a yardstick but which to measure the respective length of Marblehead and Gloucester, as Gloucester is the most common opponent of the club to be played this season.

Not too optimistic about the contest are the Marbleheaders as Gloucester has always proved the nemesis of the Red and Black elements. Coach Hewitt believes that the forward wall, which has been steadily picking up strength, will stop Frigaard's big threats Alex Destino and Eddie McKay both on the ground and in the air.

Chapman Ruins Gloucester, 13-0

Ace of Marblehead Rambles 96 Yards

GLoucester, Oct. 16 — John Chipper Chapman, Marblehead High's captain and hard running back, ran Gloucester High into the mud before 3000 at Newell Stadium here this afternoon. The score was 13-0, with Chapman accounting for one touchdown on a brilliant 96-yard run from a pass interception after the Fishermen had penetrated deep into Marblehead territory in the opening period.

Chapman aided and abetted the second score with his surging runs when the Headers marched 73 yards in the second quarter. This Marblehead drive was chiefly overland but one pass was sandwiched in with Chapman on the receiving end to set up a first down on Gloucester's 14. Then it was Chapman who thundered off his left tackle to the one, whence Hayes plunged over. The conversion was made by the air, Hayes to Kelley.

Gloucester threatened all afternoon, starting with the first period drive which went to the Marblehead 7 before the Yachtsmen braced and ended the advance with Chapman's pass interception and touchdown run.

MARBLEHEAD (13)—Le, Kelley, Parker; lt, Hazeltine; lg, Hamson, Kroskowski; c, Prince; rg, Cunningham; rt, Lewis; re, Andrews; qb, Hayes; lhb, Chapman; rhb, Tuxbury, Sweetland; fb, Ross.

GLoucester (0)—Le, Harmon, Friend; lt, W. Prince, Klotz; lg, Deltorchio; c, Curley, Keating; rg, Cook; rt, Malone, McLeod; re, Zager, Wisutski; qb, Krepka; lhb, McKay; rhb, Destino; fb, Grigg, Cooney.

Score by periods..... 1 2 3 4

Marblehead..... 6 7 0 0—13

Touchdowns—Chapman, Hayes. Point

after touchdown—Kelley (pass). Referee—

Tim McAuliffe. Umpire—Steve Patten.

Linesman—Dr. Joseph H. Burnett. Field

judge—Harold A. Harvey. Time—10m. pe-

riods.

'Headers Take Gloucester, 13 to 0

Marblehead High Magic Makers chalked up their third straight win and incidentally, their 17th victory in a 23-game series with Gloucester by sending the Fishermen down to a 13 to 0 defeat on muddy Newell stadium Saturday afternoon.

Captain John "Chipper" Chapman personally escorted the Hewitt hustlers to a victory, scampering 96 yards in the first canto after intercepting a pass, for a touchdown and breaking loose again for a 20-yard run in the second stanza after taking rock Hayes' pass to spot the hog hide on the Fishtown 14-yard marker.

Gloucester was driving the Headers back in the first period when Chapman changed the entire complexion of the contest. The Gloucestermen had rolled to the Yachting seven-yard mark and, meeting a stalwart resistance, took to the air. Chapman shot in front of Destito to snare Kepka's aerial and with Charles "Bud" Kelley blotting out Krepka, who moved over to cover the throw, was gone with the wind.

Marblehead's second count came from a sustained ground assault with the exception of Chapman's one pass reception which spotted the oval on the enemy 14. The Red and Black rolled 73 yards. On third down Chapman, given excellent assistance by his forward wall, cracked left tackle for the final score.

With their smooth-functioning ground and overhead game, the Headers were deprived of rolling up a big score by the condition of the gridiron. The excellent pitching of Brock Hayes was one of the features of the contest. His control of the wet pigskin was a joy to the Head fans. Charlie Prince also stood out in the frontier. Destito and Curley glittered for the Fishermen. The summary:

MARBLEHEAD (13)—Kelley, Parker, le; Hazeltine, Kiley, lt; Chrowiowski, Hamson, lg; Prince, c; Cunningham, rg; Lewis, rt; Andrews, re; Hayes, qb; Chapman, lhb; Tuxbury, Sweetland, rhb; Ross, fb.

GLoucester (0)—Zager, Wisutski, re; Malone, McLeod, rt; Cook, rg; Curley, Keating, c; Deltorchio, lg; W. Prince, Klotz, lt; Harmon, Field, le; Krepka, qb; Destito, rhb; McKay, lhb; Grigg, Cooney, fb.

SCORE—Marblehead 13, Gloucester 0. Touchdowns—Chapman, Hayes. Point by pass after touchdown—Kelley. Referee—McAuliffe. Umpire—Patten. Linesman—Burnett. Field judge—Harvey. Time—10-minute periods.

'Headers Work Out Despite Weather

Marblehead Magic Makers used a chart and compass for an extremely light workout as fog in irregular two by four chunks descended on Reynolds' stadium yesterday afternoon.

Coach Ralph Hewitt is keeping his starters on their toes, but as they are about at the peak, hard labor is ruled out. The varsity which will meet Lynn English at Manning bowl Monday night was sent through a signal drill and was exercised with a run around the field and kicking and passing the hoghide.

For the second and third teams it was another story as the Marblehead mentor sent them through a stiff scrimmage in his policy of toughening the scrubs for actual combat. Marblehead's starting lineup against the Red and Gray will remain unchanged.

Marblehead has received a check or \$451, its slice of the spoils from the Peabody contest, according to Faculty Manager Edward C. Lemick.

Although Marblehead has played two-game series in Tannery town because Peabody officials believed the revenue would be greater than an inclosed gridiron, official figures of the six-game series before athletic relations were ruptured with the Seeglitzmen, knock his argument haywire, Marblehead school authorities disclose the six-game series which was played on a home and home basis turned Peabody \$135.70 more than did Marblehead, Athletic association, accounts show.

Marblehead school officials will press for a new agreement with their old rival, calling for two consecutive games at Reynolds' stadium beginning in 1944.

Night Game Sanctioned Officially by State

Classical to Meet Saugus Tomorrow; Danvers to Appear at Swampscott

(By HARVEY SOUTHWARD)

Lynn English and Marblehead will battle under the lights at Manning Bowl, Monday night at 8 o'clock, Faculty Manager Ralph Farnum announced today as a result of a conference early today in which he was granted that permission through the office of Governor Saltonstall and officials of the State Public Safety committee. Marblehead agreed to shift the contest from tomorrow.

It will be the first game since dimout regulations blackened the coast and it means that the menace of the enemy U-boats has been overcome.

Faculty Manager Farnum would not go ahead until he had consulted Earl Wells, chief dimout official of this section, and had furthermore received a State sanction to go ahead.

LIGHTS GO ON AGAIN

So, the lights will go on again at Manning Bowl and very soon, it is hoped, all over the world, that men may become free again and return to a normal way of living.

'Headers Top Lynn English

Click Under Lights For 20-6 Triumph

The football teams of Marblehead High and Lynn English lifted the cover off the New England coastal dimout by playing before a 9000 crowd last night in Manning Bowl Lynn, with the invading Magicians fashioning three completed aeriels for a 20-6 victory.

Left end Buddy Kelley and tailback Johnny Chipper Chapman scored all of Marblehead's points to offset a second-period marker by Clayton Sheehan of the hapless homesters who were absorbing their 15th defeat in the last 16 games.

Kelley went across first, clutching a fourth-down, 5-yard pass from Bob Ross which climaxed a 75-yard first-period drive. Chapman then dashed across with Marblehead's second touchdown to cap the spectacular second-period drive of 70 yards which took just two plays.

The first was a pass, Brock Hayes to Bud Kelley, which brought the ball from the Marblehead 30 to Lynn's 35; the second was a 15-yard toss, Hayes to Chapman, who made a miraculous clutch of the ball over his left shoulder and ran the remaining 20 yards to the end zone.

Lynn fought back for its second touchdown of the season just before the half ended. Sheehan set the stage by blocking a Chapman punt on the Marblehead 49. Bernie Chalet covered the ball for Lynn on the Marblehead 14. After a punch good for one yard at center, Sheehan raced 13 yards around left end for the score.

At Lynn

MARBLEHEAD HIGH (20)—Le. Kelley; lt. Hazeltine; lg. Hanson, Krostowski; c. Prince; rg. Cunningham; rt. Lewis; re. Andrews; qb. Hayes; lhb. Chapman; rhb. Tuxbury; fb. Ross, Sweetland

LYNN ENGLISH HIGH (6)—Le. Gannon, Smallwood; lt. Sheehan; lg. Malakian; c. Tanny, Watson; rg. Curry, Shalot; rt. Ferris, Griffin; re. Johnson, Dillon; qb. Littlefield; lhb. McManus, Sherman; rhb. Buckley, Irwin; fb. Nihan, Brown.

| | | | | | |
|------------------------|---|---|---|---|-----|
| Periods..... | 1 | 2 | 3 | 4 | |
| Marblehead High..... | 7 | 6 | 7 | 0 | —20 |
| Lynn English High..... | 0 | 6 | 0 | 0 | —6 |

Touchdowns—Kelley (5-yard pass from Ross), Chapman (15-yard pass from Hayes, 20-yard run), Sheehan (13-yard end run), Kelley (32-yard pass from Ross). Points after touchdown—Chapman (placement), Chapman (dropkick).

Referee—Leroy, Kelley (Dartmouth), Robert Perry (N. H. State). Linesman—William O'Connor (Somerville). Field judge—Fred Donovan (Villanova). Time—10m. periods.

'Headers Take Beverly in 19-0 Tilt

Marblehead Magic Makers made it six straight by passing and running circles around Beverly to win before 6000 fans at Hurd Stadium Saturday afternoon, with the Red and Black triumvirate "Chipper" Chapman, "Clutching Hand" Kelley and Brock Hayes playing the leading roles.

In the first and third chukkers, however Beverly sprang a surprise on their guests sweeping into the shadow of their goal posts before they were repelled. Charles Prince discouraged the outburst in the initial period barging through to smear Hathaway for a 10-yard loss after the Orange and Black had rolled 60 yards to the Red and Black 12.

Beverly's third period assault which featured an attack up through the middle alternated with nicely timed flankers also steamed along for 65 yards, being punctuated by Bob Ross who macadamized the enemy center and caught Hathaway before the play developed.

Although Chapman chalked up most of the yardage for the Hewitt huskies, being credited with two touchdowns, Brock Hayes pitched a superb game with the hoghide and both Kelley and Chapman kept a death grip on the oval when it came their way. The Tozmen put a trailer on Kelley in an attempt to bottle up the pass snatcher and ultimately Hormel meted out a penalty for flagrant interference with the receiver.

Failure of the other Marblehead leather-luggers to make any huge gains was mainly through their neglect to stick with the interference until they had been escorted into the clear. Mel Hamson excelled in the forward wall outracing his ends in covering punts and fixing the stage for the second frame count by pouncing on Hathaway's fumble on his own 47. The summary:

MARBLEHEAD (19)—Kelley, 1c; Hazliff, 1t; Hamson, Chrotowski, 1g;

Prince, Hamson, c; Cunningham, Osgood, rg; Lewis, rt; Andrews, re; Hayes, qb; Chapman, lhb; Tuxbury, rhb; Ross, Sweetland, fb.

BEVERLY (0)—Hilton, Tower, re; Pelonzi, rt; Naugler, Pasek, rg; Celeniano, Dooling, c; Elliott, Roberts, lg; V. Modugno, lt; Carr, le; Murphy, Cram, Donlon, qb; Hathaway, rhb; S. Modugno, Dooling, lhb; Bresnahan, Robinson, fb.

SCORE—Marblehead 19, Beverly 0.
TOUCHDOWNS—Chapman 2, Kelley. Point—Hayes. Referee—Hormel. Umpire—Mitchell. Linesman—Donovan. Field judge—Cruess. Times—10 minute periods.

Chipper Chapman To Enter Navy V-12 School

Captain John (Chipper) Chapman of the Marblehead Magic Makers, who attains his 18th year in December, will head for a commission in the Navy through the V-12 program. Chipper had planned to follow up his overhead game on the gridiron by entering the Air Forces, but a former classmate, Vernon Norton, now studying in the V-12 outfit, showed him the educational advantages held out by the Navy.

Lewis to Play Final Game Saturday

Fred (Nimmer) Lewis, stalwart tackle of the Magic Makers will make his farewell appearance in North Shore interscholastic circles Saturday when the Marbleheaders collide with Saugus at Stackpole stadium. Freddy will report Monday for the Army Air Corps where he has received a billet as cadet.

With the traditional Turkey Day classic with Swampscott just around the corner, Coach Ralph Hewitt will be forced to rebuild the left side of his line on short notice. Hewitt, who is not wealthy in replacement material may swing Bob Cunningham, right guard to the tackle slot and move Hank Chowski over to fill Cunningham's shoes. Osgood, a reserve is another possibility which the mentor is taking under consideration.

Since the season got underway, the Magic Makers have been riddled by players entering the armed forces. Starting out with a custombuilt line of seasoned veterans, the entire right side was wrecked when Bill Bray, guard, Jim Jordan, tackle and Gene Girouard, end, joined the colors.

TWO REGULARS OUT OF LINEUP

Sachems Ready for Marblehead on Saturday

By WESLEY W GAGE

Although without the services of two of his regulars, Coach Dave Lucey of Saugus has high hopes of upsetting the high riding Magic Men of Marblehead, who after a shaky start have bowled over their last six opponents by lopsided scores. The game is scheduled to be played at Stackpole's Field, Saugus with the kickoff at 3 p. m., and there should be plenty of fireworks before the final whistle is blown.

The Magicians have in Brock Hayes, one of the smartest quarterbacks along the North Shore, who knows that when the opposition bottles up fine backs like "Chipper" Chapman and Ross the only thing to do is pass.

The Saugus line is made up of green material and early season predictions picked this as their weak spot, but this has proved not to be the case as it has been the Sachems defensive backs that

predictions however, the Sachems have been brushing up on their pass defense all week and may pull a little magic on this Marblehead eleven when they get their hands on the pigskin.

Danny Sharp, who last week took over the signal calling in place of the ailing regular quarterback Leon Cook, has been shifted again, this time to fullback. Co-Captain Doug Waybright will fill Frankie Pyzsko who is sidelined because of an ankle sprain sustained in the Swampscott game, left half back position, "Killer" Kane will be right half back and Leon Cook will again take over his quarterback post. Sharp has been used mainly as a blocking back this year, doing very little ball carrying but during recent practice sessions has come along fast, and Lucey is depending on him to gain valuable yardage come gametime. Warren Parsons who filled in so capably for Co-Cap against Swampscott will again tain Jim MacDougal last week start at right end.

MEDFORD, Nov. 12—Varsity end Bob Sherry was back in action of Tufts today as the Jumbo gridiron warriors wound up practice for the game tomorrow with Harvard. Sherry a mainstay in the line, has been absent

MARBLEHEAD LINEUP



| | | | | | | |
|---------------------------|------------------------------------|---------------------------|--------------------------|------------------------------|------------------------------|----------------------------|
| LE Kelley 47 | LT Chrostowski 42 | LG Hamson 44 | C Prince 48 | RG Cunningham 5 | RT Hazeltine 12 | RE Andrews 50 |
| | | | QB Hayes 3 | | | |
| | LHB Chapman (Capt.) 2 | | | RHB Tuxbury 4 | | |
| | | | FB Ross 49 | | | |

Headlinesman: Walter Boyson

Field Judge: Robert Perry

MARBLEHEAD STATISTICS

| No. | Name | Pos. | Age | Wt. | Ht. | Class | No. | Name | Pos. | Age | Wt. | Ht. |
|-----|----------------|------|-----|-----|-------|-------|-----|-----------------|------|-----|-----|-------|
| 1. | Barry, P. | B | 15 | 145 | 5'9" | '45 | 26. | Carey, B. | B | 16 | 158 | 5'9" |
| 2. | Chapman, J. | B | 17 | 170 | 5'11" | '44 | 27. | Tremblay, J. | B | 15 | 125 | 5'6" |
| 3. | Hayes, R. | B | 17 | 145 | 5'7" | '44 | 28. | Daggett, J. | G | 15 | 148 | 5'8" |
| 4. | Tuxbury, F. | B | 16 | 138 | 5'7" | '45 | 31. | Bartlett, P. | T | 15 | 140 | 5'5" |
| 5. | Cunningham, R. | G | 17 | 160 | 5'10" | '44 | 32. | Chandler, F. | B | 15 | 160 | 5'6" |
| 6. | Goodwin, G. | E | 15 | 170 | 5'10" | '46 | 35. | Graves, F. | B | 15 | 115 | 5'1" |
| 7. | Sweetland, D. | B | 16 | 145 | 5'6" | '46 | 37. | Barry, J. | B | 15 | 132 | 5'7" |
| 8. | Lewis, F. | T | 18 | 185 | 5'11" | '44 | 38. | Clark, H. | B | 17 | 135 | 5'9" |
| 9. | Kiely, W. | C | 15 | 173 | 5'11" | '46 | 40. | Smith, D. | E | 15 | 143 | 5'10" |
| 12. | Hazeltine, P. | T | 15 | 186 | 5'9" | '45 | 41. | Shea, E. | B | 17 | 150 | 5'10" |
| 13. | Bartlett, D. | T | 15 | 150 | 5'5" | '46 | 42. | Chrostowski, H. | T | 16 | 175 | 5'10" |
| 15. | Underhill, M. | T | 16 | 180 | 5'11" | '45 | 43. | Osgood, W. R. | G | 15 | 144 | 5'5" |
| 16. | McMahon, W. | T | 15 | 158 | 5'9" | '45 | 44. | Hamson, M. | G | 17 | 158 | 5'9" |
| 17. | Lanngren, J. | E | 16 | 160 | 6'1" | '45 | 45. | Parker, R. | E | 15 | 152 | 6'0" |
| 18. | Knight, H. | G | 15 | 150 | 5'6" | '46 | 46. | Cross, C. | B | 15 | 140 | 5'5" |
| 19. | Murphy, C. | T | 14 | 165 | 6'1" | '46 | 47. | Kelley, C. | E | 17 | 160 | 5'11" |
| 20. | Goodwin, E. | B | 14 | 135 | 5'6" | '46 | 48. | Prince, C. | C | 16 | 175 | 5'11" |
| 21. | Masterson, J. | B | 16 | 160 | 5'10" | '46 | 49. | Ross, R. | B | 17 | 160 | 5'9" |
| | | | | | | | 50. | Andrews, D. | E | 16 | 170 | 6'1" |

1943's Leading School Stars

Honorary Captain

Private George Ford, Lowell High, Fort Devens, Mass.

FIRST TEAM

| Player, School, Position | Age | Weight | Height |
|--------------------------------------|-----|--------|----------|
| Leo Troy, Melrose, End | 17 | 175 | 5ft 10in |
| Sal Rizzo, Waltham, Tackle | 18 | 160 | 5ft 11in |
| James Oteri, Weymouth, Guard | 16 | 160 | 5ft 10in |
| John Hurstack, Dorchester, Center | 15 | 175 | 6ft 1in |
| Lou Del Poie, Framingham, Guard | 18 | 162 | 5ft 9in |
| Howard Houston, Haverhill, Tackle | 18 | 190 | 6ft |
| Walter Coulson, Lawrence, End | 17 | 170 | 6ft |
| John Chapman, Marblehead, Back | 17 | 170 | 5ft 11in |
| Giles Powell, Boston English, Back | 17 | 170 | 5ft 10in |
| Mel Massucco, Arlington, Back | 18 | 165 | 5ft 10in |
| Tony Romano, Waltham, Back | 17 | 158 | 5ft 8in |
| Clayton Sheehan, Lynn Eng, Util Line | 18 | 180 | 6ft 11in |
| Joe Giannelli, Medford, Util Back | 17 | 155 | 5ft 10in |

SECOND TEAM

| | | |
|-----------------------------|-----------|----------------------------|
| William Brady, Bost Eng | End | Art Carleton, Everett |
| Alden Murphy, Melrose | Tackle | George Florentine, Everett |
| Joe Tassinari, Beverly | Guard | Junie McGrath, Natick |
| Vaughan Bogosian, Medford | Center | Bob O'Neil, Watertown |
| Mal Allen, Melrose | Guard | William Shields, Bos Latin |
| Walter Overko, Dedham | Tackle | Irving Heller, Revere |
| Charles Kelley, Marblehead | End | Spofford Brown, Amesbury |
| Ed Clasby, Natick | Back | Frank Mackie, Abington |
| George Sowle, Melrose | Back | George Morehouse, Medford |
| Ray Sullivan, Johnson | Back | Tom Bailey, Swampscott |
| Ralph Pasquariello, Everett | Back | Ed Gingrich, Winthrop |
| John Clayton, Chelmsford | Util Line | Art Craig, Quincy |
| Vin Lombardo, Charlestown | Util Back | Art Allum, Hingham |

THIRD TEAM

Honorable Mention

ENDS

Anderson, Waltham; Bournazos, Scituate; Bielskis, Brockton; Cormier, Methuen; Collins, Pynchard; Carey, Gardner; Demeritt, Haverhill; Fair, Natick; Finan, Waltham; Gosselin, Johnson; Harris, Fitchburg; Kelly, Boston English; Halliday, Winthrop; Henderson, Marshfield; Hutchins, Hingham; Melli, Charlestown; O'Leary, Cathedral; Jenkins, Hudson; Jordan, St. Patrick's; Jackman, North Quincy; Lamers, Milton; Lapworth, Stoughton; Murray, Weymouth; Murdock, Middleboro; Malcaris, Lynn Classical; MacDougall, Saugus; O'Sullivan, Wellesley; Post, Kingston; Perednia, Norwood; Pavo, Coyle; Rist, Athol; Sarno, Revere; Spinney, Saugus; Bowdring, St. Clement's; Childs, Watertown; Hutchins, Abington; Hill, Needham; Miluskewicz, Lynn Classical; Cronin, Boston Trade; Jefferson, Hanover; Febert, East Boston; Franklin, Brandeis; Czymczuk, South Boston.

TACKLES

Bergin, Malden; Butler, Weymouth; Belforti, Framingham; Bard, Leominster; Bush, Abington; Brannagan, Marlboro; Cunningham, Hopkinton; Connolly, Mission; Duffy, St. Mary's (B); Daley, St. James; Daley, Belmont; Quinn, B. C. High; D'Angelo, Tewksbury; Derba, Immaculate; Emerson, Brookline; Furdan, Waltham; Grant, Athol; Hammerman, Winthrop; Hegarty, St. Clement's; Holub, Johnson; Issenberg, Lawrence; Johnson, Wellesley; Kelleher, Canton; Le Blanc, Central Catholic; Manzo, Somerville; Merrill, Abington; Malone, Gloucester; Otto, Methuen; Pelletier, Peabody; Saredelli, Wakefield; Reagh, Weymouth; Sibson, Framingham; Chet Szablak, Lowell; Sullivan, Wellesley; Thrasher, Rockland; Ward, Melrose; Werbiekas, Lynn Clas-

sical; Young, Fairhaven; Straka, St. Bernard's; Williams, Swampscott; Osganian, Boston English; Albertelli, Arlington; Powell, Mission; Watson, New Bedford; De Lorenzo, Brandeis.

GUARDS

Antosca, Mansfield; Femia, Mechanic Arts; Bryson, Newton; Kolvoson, Public Latin; Casasanti, Clinton; Chisholm, Reading; Cornetta, Revere; Dero, Winchester; King, B. C. High; Doherty, Johnson; Keane, Boston English; Darsch, Whitman; Fay, Westboro; Graziano, Milford; Horne, Concord; Hartnett, St. Mary's (B); Husch, Durfee; Jackson, Attleboro; McHugh, Waltham; Mulcahy, St. Mary's (W); Naugler, Beverly; Maida, Chelsea; Sibley, Amesbury; Simmons, Dartmouth; Terrestre, Waltham; Thornburn, Woburn; Varkas, Brandeis; Tremblay, Jamaica Plain; Zollan, Scituate; Liepe, Brockton; Cheever, Lynn Classical; Russo, Everett; Dalto, Weymouth; Dagirmanjian, Northbridge; Connolly, Mission; Fife, Arlington; Kalafatas, Boston English; McNamara, Oliver Ames; Harrington, Immaculate; Mann, Milton; Valma, Norwood; Kelly, St. Clement's.

CENTERS

Brault, New Bedford; O'Donnell, Boston English; Landrigan, Malden Catholic; Arena, Natick; Canale, Immaculate; Christian, Quincy; Denivitch, Concord; Doherty, Johnson; Garrity, Leominster; Jacobs, Lawrence; Lawson, Stoneham; Lavery, Braintree; Montero, Taunton; Robinson, Dedham; Natale, Winthrop; Walsh, Newburyport; Wheeler, Weston; Bowler and Merowicz, Waltham; Luongo, Everett; Luongo, Revere; Patton, Attleboro; Fitzgerald, North Quincy; Flammia, Mansfield; Kallenberg, Roslindale; Hatchliffe, Wakefield; Saunders, South Boston.

BACKS

Ricciardi, Charlestown; Driscoll,

Waltham; Sheridan and Brennan, Melrose; Zeno, Waltham; Gallagher and Harwood, Public Latin; Powell, Hyde Park; Farrell, Boston English; McHenry, Weymouth; Ray, Dedham; Aumen, Braintree; Vincent, Arlington; Coveney, Hunt, Weymouth; Soma and Devino, Framingham; Clarke, Watertown; Noonan, Brookline; Pensavalle, Everett; Ventola, Revere; Grady, Lynn Classical; Shea, Osgood and Rooney, Somerville; Recco and Meirovitz, Newton; Van Bellingham, Lawrence; Waybright, Gloucester; Shea, Salem; Haley, Newburyport; Grant and Friberg, Swampscott; Wallace, Winthrop; Opolka, Chelsea; Carey, Milford; Destino, Gloucester; Ahearn, Reading; Carty, Jamaica Plain; Abreu, Woburn; Gigliotti and Montisanti; Haverhill; Antonucci, Leominster; Anderson and Denninger, Mechanic Arts; Rennie, Johnson; Hesch, Methuen; Angelo, Stoneham; Smith, Waltham; Dunlop, North Quincy; Lints, Quincy; Evans, Wakefield; Danforth, Whitman; Finn, Milton; Grant, Wellesley; Fuller, Scituate; Nihan, Lynn English; Brassard, St. Bernard's; Cerullo, East Boston; Charbonneau, Rockland; Poto, East Boston; Manning, South Boston; Elliott, Belmont; Dragan, Framingham; Thurber, Chelmsford; De, Concord; Curtis, Canton; Farrante, Milton; Papoulious, Amesbury; Lamb, Jamaica Plain; Aho, Fitchburg; Songin, Walpole; Griffith, New Bedford; Carroli, Durfee; Iannello, Mansfield; Keohane, Coyle; Beuregard and Barrera, Hudson; Kekins, Ashland; Povillais, Brockton; Capiello, Brockton; Casey, Amesbury; Antzak, Boston Trade; White, Weston; Polumbo, Ashland; McKenna, Concord; Williams, Taunton; Rose, St. Mary's (B); Burke, St. Patrick's; Johnson, St. Mary's (W); Roche, Peabody; Green, Needham; Gerrior, Middleboro; Caravello, Plymouth; McBride, Hopkinton; Hathaway, Beverly; Rogers, Maynard; Hatch, Malden; Brady, St. Clement's; Smith, Malden Catholic; O'Brien, Brighton; Scafati, Dedham; Condon, Mission; Weir, Central Catholic; Flavell, Marshfield; Zwicker, Hanover; Calkins, Kingston; Tranovich, Norwood; White, Westboro; Mahoney, Northbridge; Tibauda, Winchester; Brinkerhoff, Cambridge Latin; Whelan, Lynn English; Ratto, Dorchester; Beuceller, Rindge; Boverini, Lynn Classical; Fitzgibbens, B. C. High; Lowry, Natick; Larrabee, Concord; Harlow, Oliver Ames; Sabbog, Jamaica Plain; Grayson, Yarmouth; Eldredge, Falmouth; Kettendorf, Roslindale; Hannah, Cathedral; Barry, Malden Catholic; Fahey, St. Clement; Rabbett, Immaculate.

Fair Grounds Entries

NEW ORLEANS, FRIDAY, Dec. 3

FIRST RACE—\$800, claiming, 4-year-olds and up, 6 furlongs.

| | | | |
|--------------|-----|-------------|-----|
| Foyson | 121 | Roger's Boy | 114 |
| Mismark | 115 | Sir Talbot | 111 |
| Count Cha | 118 | Annie Alone | 111 |
| Brown Flower | 106 | Flashtown | 114 |
| Grand Rush | 108 | Pom Cal | 116 |
| Miss Frakes | 107 | Top Nole | 114 |
| Wise Hobby | 106 | Runaway Boy | 111 |
| Belplay | 114 | Celesti F | 113 |

SECOND RACE—\$800, claiming, 2-year-olds, 6 furlongs.

| | | | |
|--------------|-----|-------------|-----|
| Sway | 113 | Liberty Bon | 115 |
| Spring Glory | 110 | Sure Gay | 115 |
| Golden Straw | 108 | Gremlin | 111 |
| Witch Work | 107 | Help Wanted | 110 |
| Miss Jo Jo | 108 | Templet | 112 |
| Patrol Pilot | 108 | Tom Creek | 107 |